

# CASABLANCA

GLAZED CERAMIC | WALL TILES

COLOUR PATTERN ABSOLUTE



f X Instagram TikTok Pinterest YouTube

[www.johnson-tiles.com](http://www.johnson-tiles.com)

© 2024 Johnson Tiles Limited

Est. 1901  
**JOHNSON  
TILES**



# CASABLANCA



SIX COLOURS

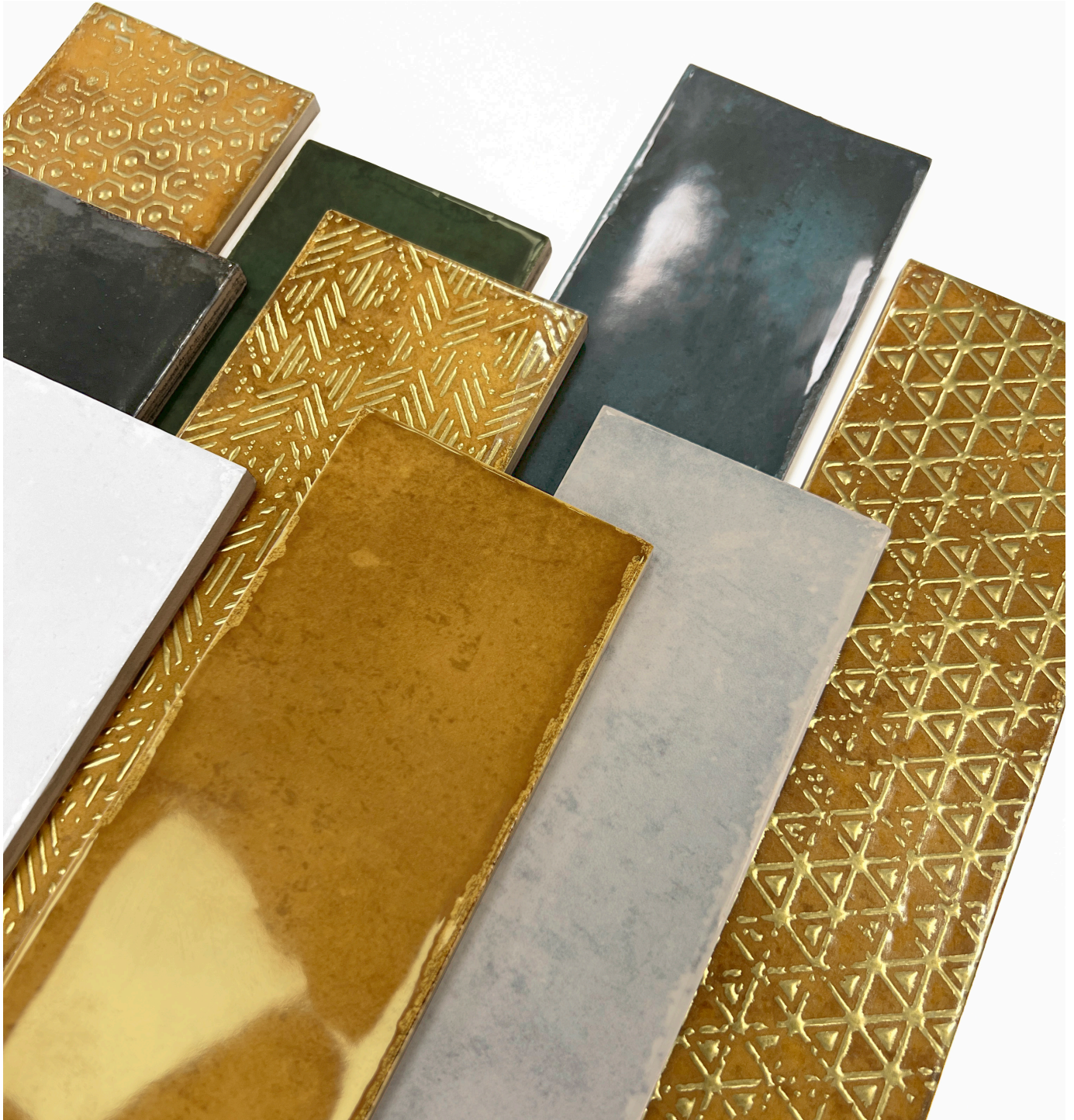


ONE SIZE



ONE FINISH

Casablanca is a stylish collection of rustic, slim format glazed ceramic wall tiles. This range features a modern palette of six luxurious colours: White, Pearl, Honey, Green, Blue, and Black, all available with matching décor options in a 240x70mm size. Each box of décors includes a random mix of three eye catching designs. The glossy finish, combined with a high degree of shade variation, adds contemporary flair to any interior. The versatile size also allows for creative freedom with multiple tile layout possibilities.







Pearl Gloss 240x70x8.5mm – CAS02A



Honey Gloss 240x70x8.5mm – CAS03A







# COLOURS AND PRODUCT CODES

V4: High Shade Variation

---



**WHITE** LRV: 74

Product Code: ☐ CAS01A



**WHITE DÉCOR**

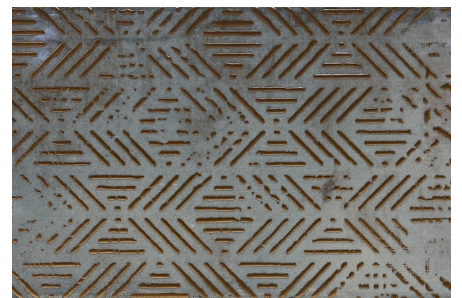
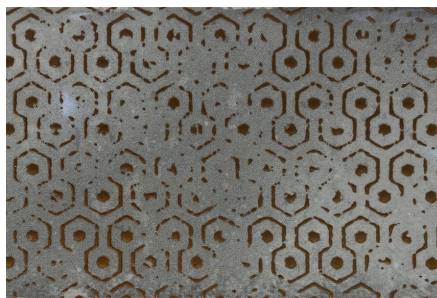
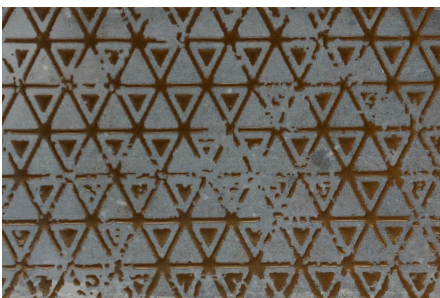
Product Code: ☐ CAS01D

**Note:** Each box of White Décor contains a random mix of all three designs shown above.



**PEARL** LRV: 37

Product Code: ☐ CAS02A



**PEARL DÉCOR**

Product Code: ☐ CAS02D

**Note:** Each box of Pearl Décor contains a random mix of all three designs shown above.



# COLOURS AND PRODUCT CODES

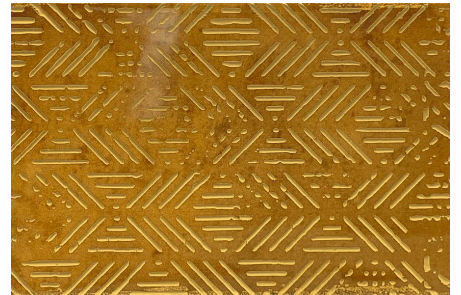
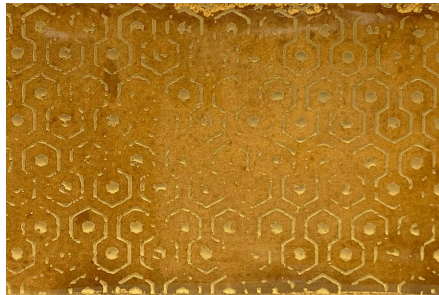
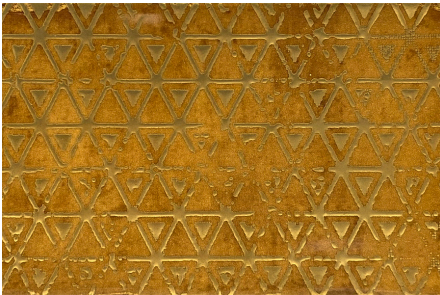
V4: High Shade Variation

---



**HONEY** LRV: 14

Product Code: G CAS03A



**HONEY DÉCOR**

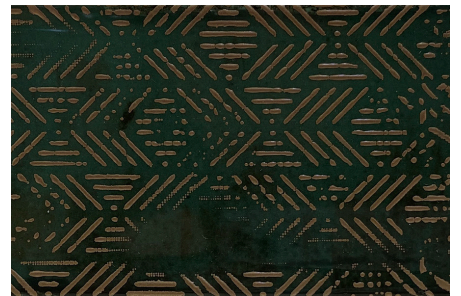
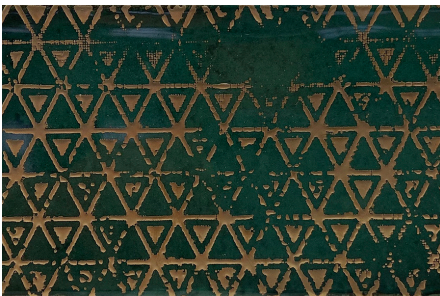
Product Code: G CAS03D

Note: Each box of Honey Décor contains a random mix of all three designs shown above.



**GREEN** LRV: 11

Product Code: G CAS04A



**GREEN DÉCOR**

Product Code: G CAS04D

Note: Each box of Green Décor contains a random mix of all three designs shown above.



# COLOURS AND PRODUCT CODES

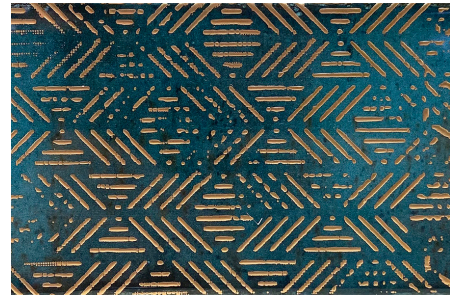
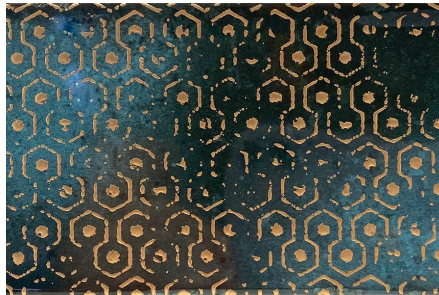
V4: High Shade Variation

---



**BLUE** LRV: 12

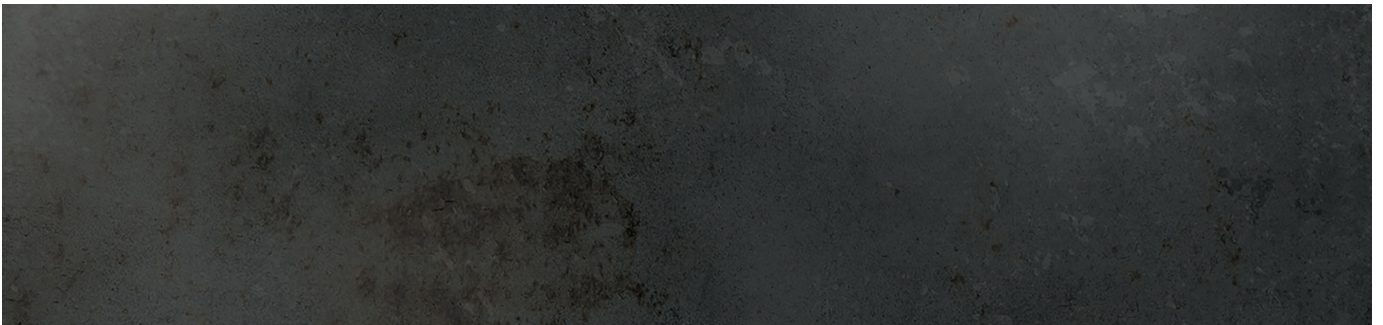
Product Code: G CAS05A



**BLUE DÉCOR**

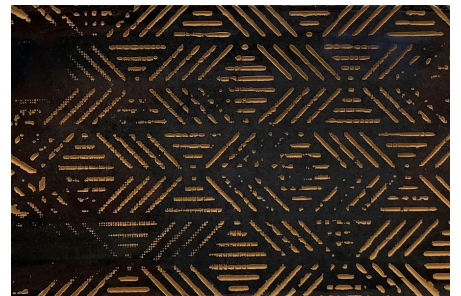
Product Code: G CAS05D

Note: Each box of Blue Décor contains a random mix of all three designs shown above.



**BLACK** LRV: 08

Product Code: G CAS06A



**BLACK DÉCOR**

Product Code: G CAS06D

Note: Each box of Black Décor contains a random mix of all three designs shown above.




## SIZE FORMATS AND AVAILABILITY

Size Options and Packing Information

01



#	Size Format	Thickness	Finish	Structure	Availability	Class	Pcs / Box	M <sup>2</sup> / Box	Kg / Box
01	240x70mm	8.5mm	 Gloss	-	All Colours Shown	BIII	32 Tiles	0.53 m <sup>2</sup>	6.90 kg

Note: Glazed Ceramic / BIII tiles. For more information please see the suitability advice given in the technical section. All sizes indicated are metric modular. All sizes shown are nominal. For the most up-to-date size, colour and finish availability, please visit our website - [www.johnson-tiles.com](http://www.johnson-tiles.com).



















# TECHNICAL SUPPORT

Specification, Sustainability and Important Information

## Product Specification

Range Name	Finish	Structure	Wall Suitability	Floor Suitability	Wet Barefoot	Material / Class
Casablanca	 Gloss	-	Internal Only	-	-	Glazed Ceramic / BIII

## Physical Properties - Glazed Ceramic / BIII

Test and Standard	Requirement	Result	Test and Standard	Requirement	Result
 <b>Length / Width</b> EN ISO 10545-2	$\pm 0.5\% \leq \pm 2\text{mm}$	Pass	 <b>Modulus of Rupture</b> EN ISO 10545-4	Min. 15N / mm <sup>2</sup>	Pass
 <b>Thickness</b> EN ISO 10545-2	$\pm 10\% \leq \pm 0.5\text{mm}$	Pass	 <b>Thermal Shock</b> EN ISO 10545-9	Pass	Pass
 <b>Straightness of Side</b> EN ISO 10545-2	$\pm 0.3\% \leq \pm 1.5\text{mm}$	Pass	 <b>Frost Resistance</b> EN ISO 10545-12	-	Not Suitable
 <b>Rectangularity</b> EN ISO 10545-2	$\pm 0.5\% \leq \pm 2\text{mm}$	Pass	 <b>Chemical Resistance</b> EN ISO 10545-13	Min. Class B	Pass
 <b>Surface Flatness</b> EN ISO 10545-2	$\pm 0.5\% \leq \pm 2\text{mm}$	Pass	 <b>Stain Resistance</b> EN ISO 10545-14	Min. Class 3	Pass
 <b>Water Absorption</b> EN ISO 10545-3	10% to 20%	$\geq 10\%$	 <b>Fire Rating</b>		Class A I Non Combustible
 <b>Weight / M<sup>2</sup></b>	<b>13.66 kg</b> 8.5mm Thick				

## Sustainability Credentials

Range Name	Material / Class	EPD	Recycled Content - Tiles	Recycled Content - Packaging
Casablanca	Glazed Ceramic / BIII	Yes	-	-

Note: Please contact our technical helpline, or visit our website for specification and installation advice.  
EPD: Environmental Product Declaration. CSV: Colour Shade Variation.

## Important Information

During the manufacturing process of ceramic and porcelain tiles, some variation in shade and pattern can occur. Before fixing any tiles; several boxes should be opened and their contents mixed to ensure that size, colour and patterning are acceptable.

The tiles shown in this literature are quality products and conform to BS EN 14411 as shown in the physical properties listed above.

For a comprehensive colour, size, finish and availability overview along with full technical and sustainability information for all products shown, please visit our website - [www.johnson-tiles.com](http://www.johnson-tiles.com)

- All sizes listed are metric modular.
- For specific suitability details, please contact our technical advice helpline or use the email address provided.
- Johnson Tiles Limited cannot accept responsibility for any tiles that have already been fixed.
- Johnson Tiles Limited reserves the right to change specification and availability information without prior notice.
- Nothing in these statements does or will affect the statutory rights of the consumer.

All product technical values quoted in this literature are supported by laboratory testing from our own and independent ceramic test houses. Johnson Tiles Limited are British Standard registered. To find out more, please contact our technical advice helpline on +44 (0)1782 524 111 or email: [ddunlop@johnson-tiles.com](mailto:ddunlop@johnson-tiles.com).



## WHERE TO FIND US

### Head Office

Harewood Street, Tunstall,  
Stoke on Trent, Staffordshire,  
ST6 5JZ, United Kingdom

Tel: +44 (0)1782 575 575  
Email: [info@johnson-tiles.com](mailto:info@johnson-tiles.com)  
[www.johnson-tiles.com](http://www.johnson-tiles.com)

---

### Material Lab Studio

10 Great Titchfield Street,  
London, W1W 8BB,  
United Kingdom

Tel: +44 (0)20 7436 8629  
Email: [info@material-lab.co.uk](mailto:info@material-lab.co.uk)  
[www.material-lab.co.uk](http://www.material-lab.co.uk)

---

### Factory Outlet

Tel: +44 (0)1782 524 040  
Email: [foutlet@johnson-tiles.com](mailto:foutlet@johnson-tiles.com)  
[www.outlet.johnson-tiles.com](http://www.outlet.johnson-tiles.com)

---

### Customer Services

Tel: +44 (0)1782 524 000  
Email: [sales@johnson-tiles.com](mailto:sales@johnson-tiles.com)  
8:30am - 5:00pm (Monday - Friday)

---

### Order A Sample

Tel: +44 (0)1782 524 043  
Email: [samples@johnson-tiles.com](mailto:samples@johnson-tiles.com)

---

### Technical Advice Helpline

Tel: +44 (0)1782 524 111  
Email: [ddunlop@johnson-tiles.com](mailto:ddunlop@johnson-tiles.com)

---

Launched: September 2024



[www.johnson-tiles.com](http://www.johnson-tiles.com) | [f](#) [X](#) [G](#) [d](#) [P](#) [in](#) [v](#)

© 2024 Johnson Tiles Limited