

COAST

UN-GLAZED PORCELAIN | FLOOR AND WALL TILES

STONE

SPECKLE

MOSAIC

SELECT



www.johnson-tiles.com

© 2024 Johnson Tiles Limited

Est. 1901
**JOHNSON
TILES**

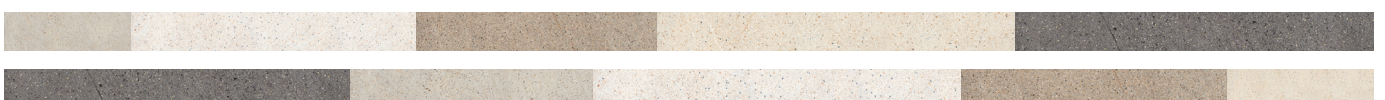
COAST

 FIVE COLOURS

 SEVEN SIZES

 TWO FINISHES

Coast is a stone-effect range creating visual interest through its speckled conglomerate design. The five architectural tones of Ivory, Beige, Grey, Taupe, and Charcoal form a contemporary colour palette ideal for commercial spaces. Two finishes are available with the Bush Hammered option providing a PTV slip resistance rating of 36+, ideal for wet barefoot applications. All field tiles within this range feature rectified edges for precision fixing.





Taupe Natural 600x600x10.5mm - CST04N



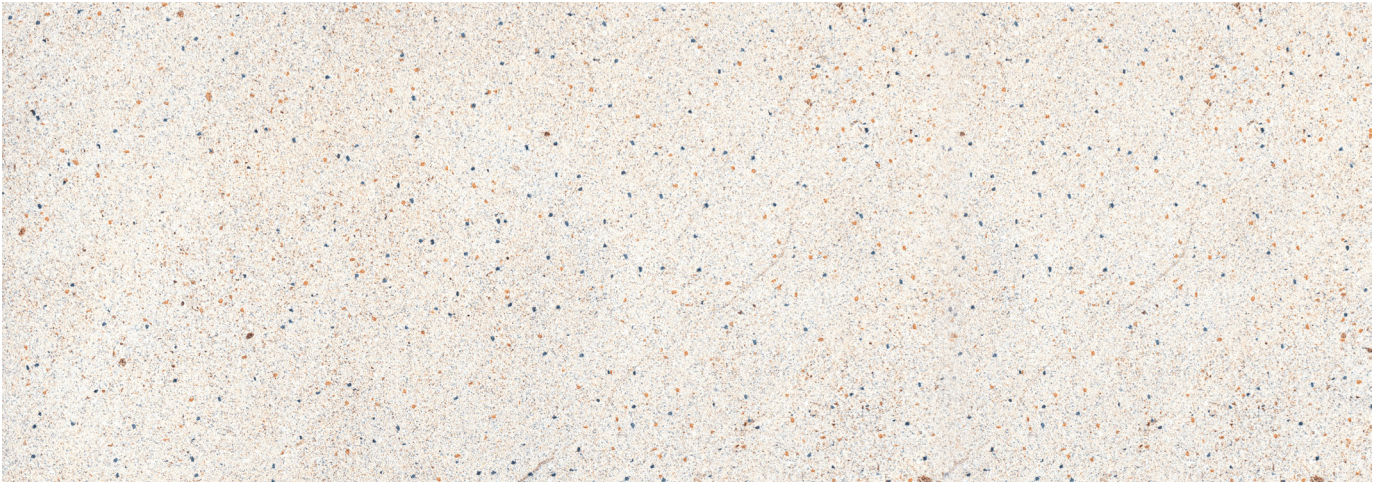
Beige Natural 890x890x10.5mm - CST02N



Grey Natural 1190x600x10.5mm - CST03N

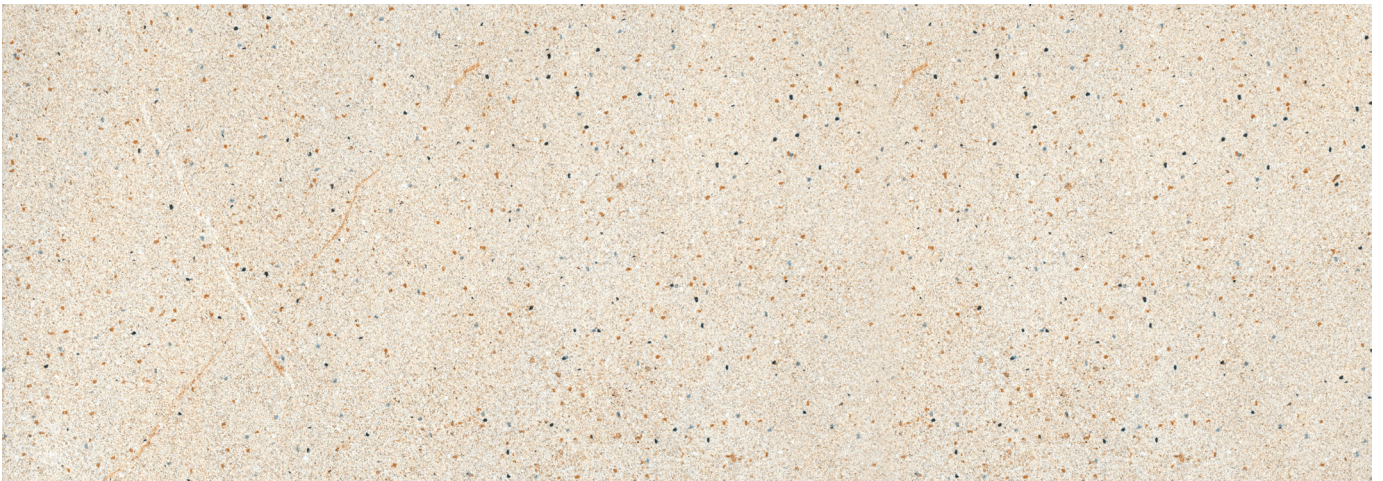
COLOURS AND PRODUCT CODES

V4: High Shade Variation



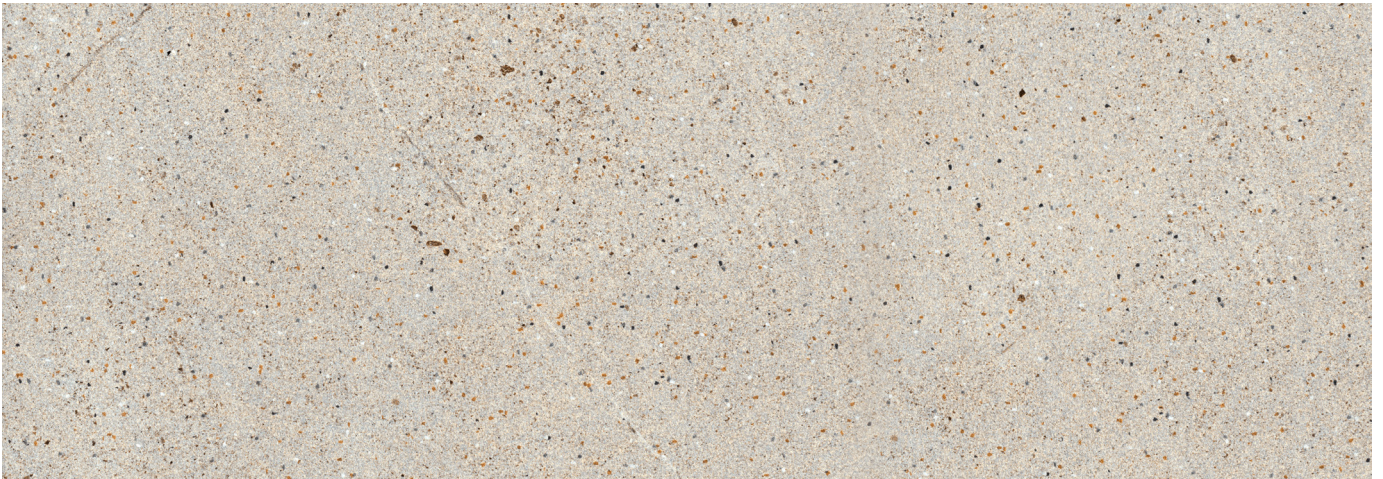
IVORY LRV: 57

Product Code: CST01N + CST01B | Mosaic Code: CST1NM | Fitting Code: CST1NS



BEIGE LRV: 53

Product Code: CST02N + CST02B | Mosaic Code: CST2NM | Fitting Code: CST2NS



GREY LRV: 38

Product Code: CST03N + CST03B | Mosaic Code: CST3NM | Fitting Code: CST3NS

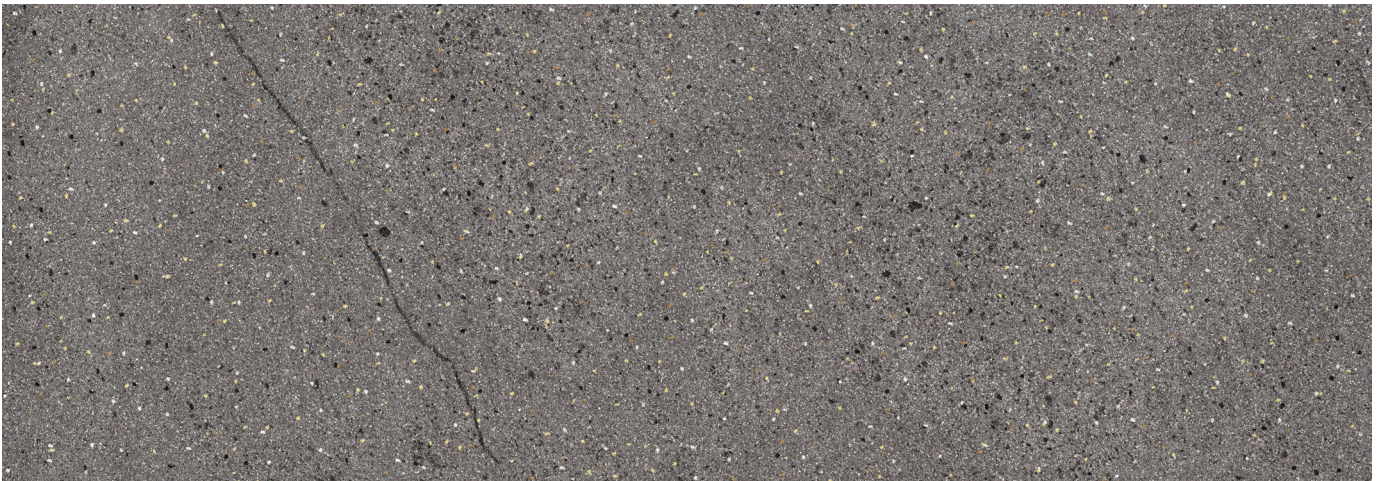
COLOURS AND PRODUCT CODES

V4: High Shade Variation



TAUPE LRV: 31

Product Code: N CST04N + B CST04B | Mosaic Code: N CST4NM | Fitting Code: N CST4NS



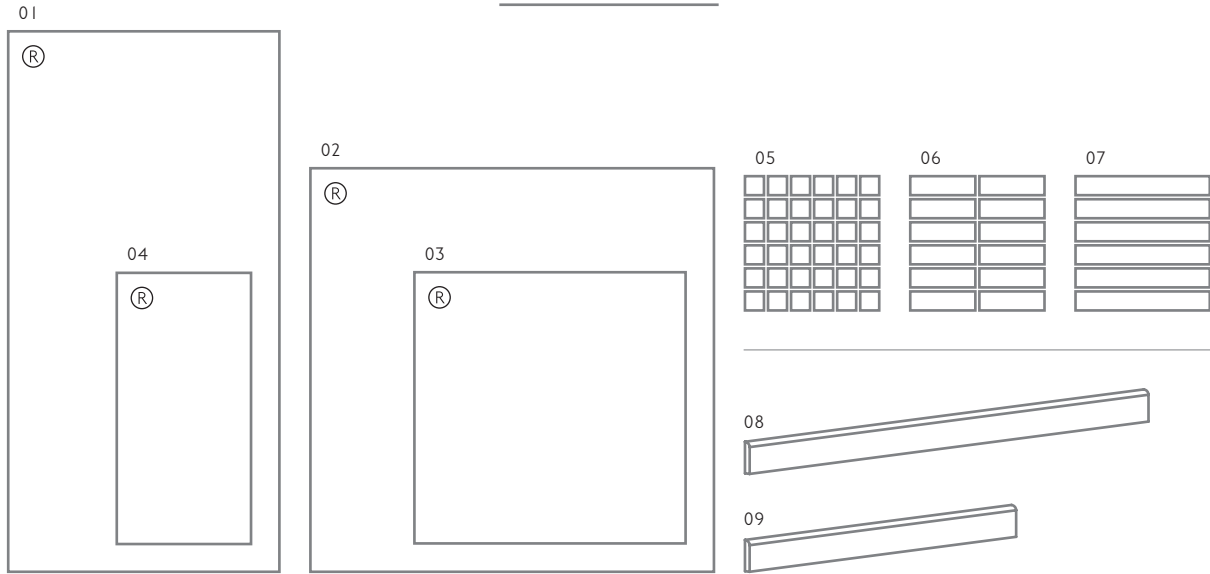
CHARCOAL LRV: 16

Product Code: N CST05N + B CST05B | Mosaic Code: N CST5NM | Fitting Code: N CST5NS



SIZE FORMATS AND AVAILABILITY

Size Options and Packing Information



#	Size Format	Thickness	Finish	Availability	Class	Pcs / Box	M ² / Box	Kg / Box
01	1190x600mm	10.5mm	(N) Natural	All Colours Shown	Bla	2 Tiles	1.43 m ²	34.79 kg
			(B) Bush Hammered	All Colours Shown	Bla	2 Tiles	1.43 m ²	34.79 kg
02	890x890mm	10.5mm	(N) Natural	All Colours Shown	Bla	2 Tiles	1.59 m ²	38.71 kg
			(B) Bush Hammered	All Colours Shown	Bla	2 Tiles	1.59 m ²	38.71 kg
03	600x600mm	10.5mm	(N) Natural	All Colours Shown	Bla	3 Tiles	1.08 m ²	24.40 kg
			(B) Bush Hammered	All Colours Shown	Bla	3 Tiles	1.08 m ²	24.40 kg
04	600x300mm	10.5mm	(N) Natural	All Colours Shown	Bla	5 Tiles	0.90 m ²	20.29 kg
			(B) Bush Hammered	All Colours Shown	Bla	5 Tiles	0.90 m ²	20.29 kg
05	300x300mm Square Mosaic	10.5mm	(N) Natural	All Colours Shown	Bla	8 Sheets	0.72 m ²	17.50 kg
06	300x300mm Strip Mosaic	10.5mm	(N) Natural	All Colours Shown	Bla	8 Sheets	0.72 m ²	17.50 kg
07	300x300mm Strip Mosaic	10.5mm	(N) Natural	All Colours Shown	Bla	8 Sheets	0.72 m ²	17.50 kg

#	Fittings	Thickness	Finish	Availability	Class	Pcs / Box	Lm / Box	Kg / Box
08	890x70mm R/T Skirting	10.5mm	(N) Natural	All Colours Shown	Bla	12 Tiles	10.68 Lm	18.00 kg
09	600x70mm R/T Skirting	10.5mm	(N) Natural	All Colours Shown	Bla	18 Tiles	10.80 Lm	18.00 kg


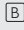
Note: Un-glazed Porcelain / Bla tiles. For more information please see the suitability advice given in the technical section. All sizes indicated are metric modular. All sizes shown are nominal. For the most up-to-date size, colour and finish availability, please visit our website - www.johnson-tiles.com. (R) Rectified Edge.




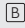
TECHNICAL SUPPORT

Specification, Sustainability and Important Information













Product Specification

Range Name	Finish	Wall Suitability	Floor Suitability	Wet Barefoot	Material / Class
Coast	 Natural	Internal and External	Internal Only	-	Un-glazed Porcelain / Bla
	 Bush Hammered	Internal and External	Internal and External	Yes	Un-glazed Porcelain / Bla

Floor Values

Finish	Colour	PTV (96)	PTV (55)	R Value	Wet Ramp	PEI	Traffic
 Natural	All Colours Shown	Wet 36+	-	R10	B	-	Commercial
 Bush Hammered	All Colours Shown	Wet 36+	Wet 36+	R12	C	-	Commercial

Physical Properties - Un-glazed Porcelain / Bla

Test and Standard	Requirement	Result	Test and Standard	Requirement	Result
 Length / Width EN ISO 10545-2	$\pm 0.6\% \leq \pm 2\text{mm}$	Pass	 Modulus of Rupture EN ISO 10545-4	Min. 35N / mm ²	Pass
 Thickness EN ISO 10545-2	$\pm 5\% \leq \pm 0.5\text{mm}$	Pass	 Thermal Shock EN ISO 10545-9	Pass	Pass
 Straightness of Side EN ISO 10545-2	$\pm 0.5\% \leq \pm 1.5\text{mm}$	Pass	 Frost Resistance EN ISO 10545-12	Resistant	Resistant
 Rectangularity EN ISO 10545-2	$\pm 0.5\% \leq \pm 2\text{mm}$	Pass	 Chemical Resistance EN ISO 10545-13	Min. Class B	Pass
 Surface Flatness EN ISO 10545-2	$\pm 0.5\% \leq \pm 2\text{mm}$	Pass	 Stain Resistance EN ISO 10545-14	Min. Class 3	Pass
 Water Absorption EN ISO 10545-3	$\leq 0.5\%$	Pass	 Fire Rating		Class A I FL Non Combustible

Sustainability Credentials

Range Name	Material / Class	EPD	Recycled Content - Tiles	Recycled Content - Packaging
Coast	Glazed Porcelain / Bla	Yes	Up to 10%	Up to 100% (Boxes Only)

Note: Due to the manufacturing process of all floor tiles there may be small variations in slip resistance. Given this, please refer to our website for the most up-to-date information. The slip resistance properties of a surface can only be maintained with the implementation of an effective regular cleaning and maintenance regime. The frequency of cleaning should be determined by the property manager based on the potential level of surface contaminants. The need for an additional regular cleaning and maintenance regime is further heightened when tiles are used for external floor and wet barefoot applications. Please contact our technical helpline, or visit our website for specification and installation advice. All floor tiles shown in this literature achieve a PTV (96) Dry 36+ test result. PTV (96): Pendulum Test Value - 4S. PTV (55): Pendulum Test Value - TRL. R Value (DIN 51130). Wet Ramp (DIN 51097). PEI: Porcelain Enamel Institute. EPD: Environmental Product Declaration. CSV: Colour Shade Variation.

Important Information

During the manufacturing process of ceramic and porcelain tiles, some variation in shade and pattern can occur. Before fixing any tiles; several boxes should be opened and their contents mixed to ensure that size, colour and patterning are acceptable.

The tiles shown in this literature are quality products and conform to BS EN 14411 as shown in the physical properties listed above.

For a comprehensive colour, size, finish and availability overview along with full technical and sustainability information for all products shown, please visit our website - www.johnson-tiles.com

- All sizes listed are metric modular.
- For specific suitability details, please contact our technical advice helpline or use the email address provided.
- Johnson Tiles Limited cannot accept responsibility for any tiles that have already been fixed.
- Johnson Tiles Limited reserves the right to change specification and availability information without prior notice.
- Nothing in these statements does or will affect the statutory rights of the consumer.

All product technical values quoted in this literature are supported by laboratory testing from our own and independent ceramic test houses. Johnson Tiles Limited are British Standard registered. To find out more, please contact our technical advice helpline on +44 (0)1782 524 111 or email: technical@johnson-tiles.com.

WHERE TO FIND US

Head Office

Harewood Street, Tunstall,
Stoke on Trent, Staffordshire,
ST6 5JZ, United Kingdom

Tel: +44 (0)1782 575 575
Email: info@johnson-tiles.com
www.johnson-tiles.com

Material Lab Studio

10 Great Titchfield Street,
London, W1W 8BB,
United Kingdom

Tel: +44 (0)20 7436 8629
Email: info@material-lab.co.uk
www.material-lab.co.uk

Factory Outlet

Tel: +44 (0)1782 524 040
Email: foutlet@johnson-tiles.com
www.outlet.johnson-tiles.com

Customer Services

Tel: +44 (0)1782 524 000
Email: sales@johnson-tiles.com
8:30am - 4:30pm (Monday - Friday)

Order A Sample

Tel: +44 (0)1782 524 043
Email: samples@johnson-tiles.com

Technical Advice Helpline

Tel: +44 (0)1782 524 111
Email: technical@johnson-tiles.com

Updated: October 2024



www.johnson-tiles.com | [f](#) [X](#) [G](#) [d](#) [P](#) [in](#) [v](#)

© 2024 Johnson Tiles Limited