

PORTLAND

PORCELAIN | FLOOR AND WALL TILES

STONE STRUCTURE MOSAIC ABSOLUTE



www.johnson-tiles.com

© 2024 Johnson Tiles Limited

Est. 1901
**JOHNSON
TILES**

PORTLAND



FOUR COLOURS

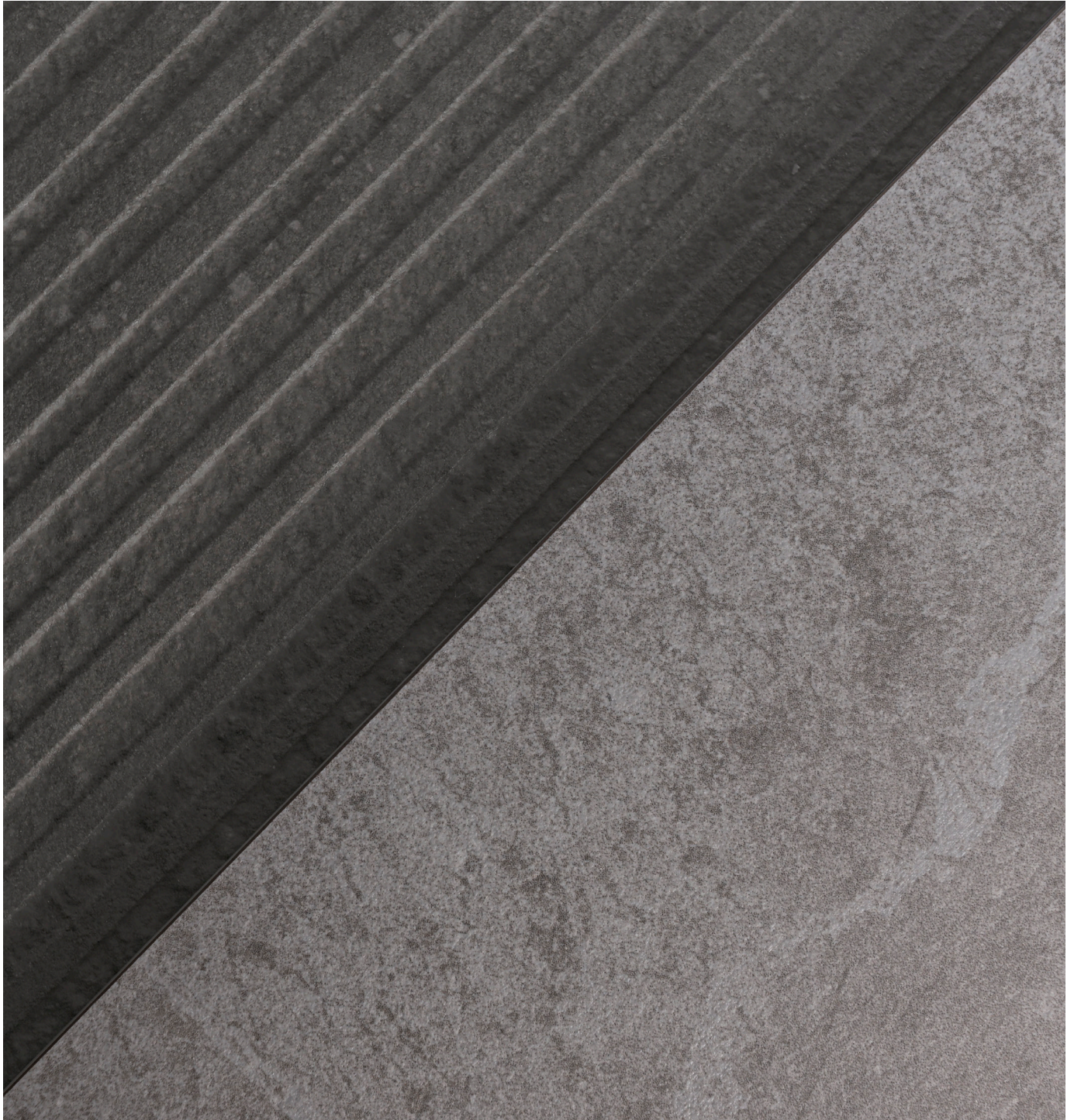


FIVE SIZES



THREE FINISHES

Portland features a smoky colour palette composed of tones of Flint, Stone, Slate, and Basalt. Portland effortlessly delivers on style, showcasing a weathered stone effect available in large format sizes ranging from 600x300mm up to 1200x600mm. Co-ordinating raised linear and inverted dot structure options provide textured flair. With a 2cm Grip+ finish also available in certain colours and a PTV 36+ slip resistance rating, Portland is synonymous with performance and presence.





Flint Natural 900x900x10mm - POR02N



Flint Linear Natural 1200x600x10mm - POR02L



Wall: Slate Natural 1200x600x10mm - POR03N
Floor: Flint Natural 1200x600x10mm - POR02N

COLOURS AND PRODUCT CODES

V2: Low to Moderate Shade Variation



STONE LRV: 53

Product Code: N POR01N + G POR01G + E POR01E | Mosaic Code: N POR2NM | Fitting Code: N POR1NS



FLINT LRV: 38

Product Code: N POR02N + G POR02G | Mosaic Code: N POR2NM | Fitting Code: N POR2NS



SLATE LRV: 32

Product Code: N POR03N + G POR03G + E POR03E | Mosaic Code: N POR3NM | Fitting Code: N POR3NS

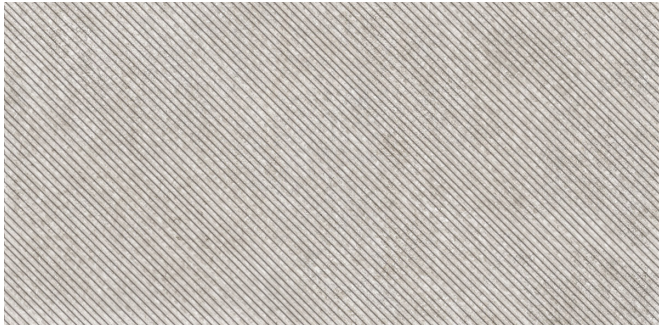


BASALT LRV: 21

Product Code: N POR04N + G POR04G + E POR04E | Mosaic Code: N POR4NM | Fitting Code: N POR4NS

COLOURS AND PRODUCT CODES

V2: Low to Moderate Shade Variation



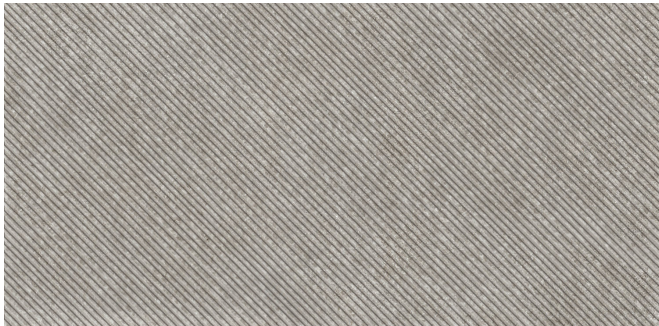
STONE - LINEAR LRV: 55

Product Code: N POR01L



STONE - DOTS LRV: 55

Product Code: N POR01D



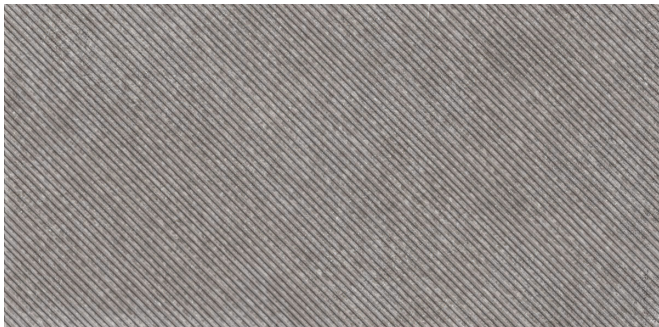
FLINT - LINEAR LRV: 38

Product Code: N POR02L



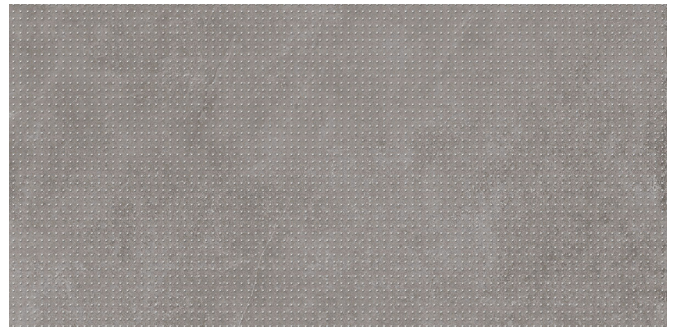
FLINT - DOTS LRV: 38

Product Code: N POR02D



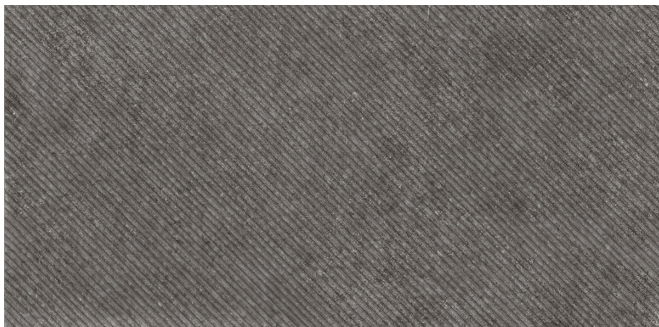
SLATE - LINEAR LRV: 32

Product Code: N POR03L



SLATE - DOTS LRV: 32

Product Code: N POR03D



BASALT - LINEAR LRV: 21

Product Code: N POR04L

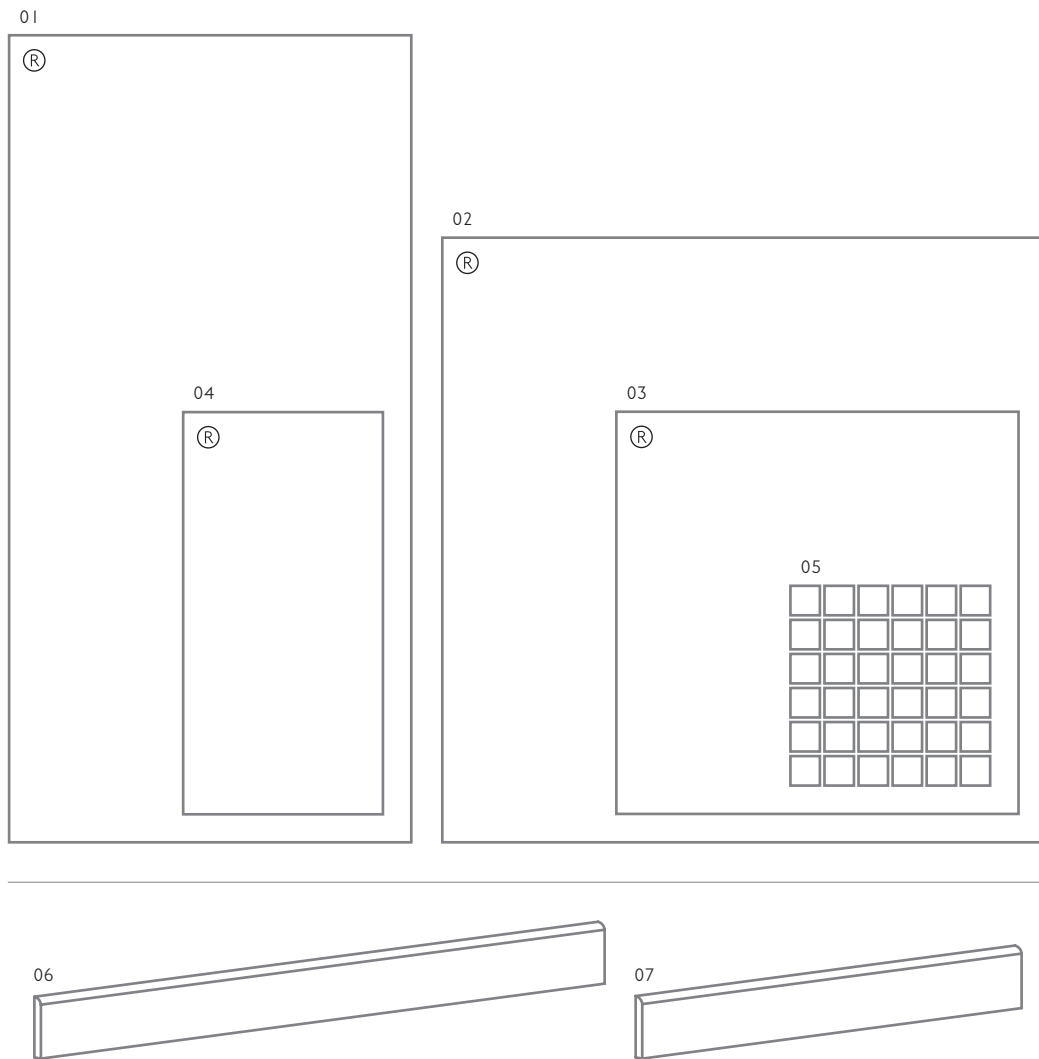


BASALT - DOTS LRV: 21

Product Code: N POR04D

SIZE FORMATS AND AVAILABILITY

Size Options and Packing Information



#	Size Format	Thickness	Finish	Structure	Availability	Class	Pcs / Box	M ² / Box	Kg / Box
01	1200x600mm	10mm	(N) Natural	-	All Colours Shown	Bla	2 Tiles	1.44 m ²	31.93 kg
			(G) Grip	Linear	All Colours Shown	Bla	2 Tiles	1.44 m ²	31.93 kg
		20mm	(E) Grip+ 2cm	-	All Colours Shown	Bla	2 Tiles	1.44 m ²	31.93 kg
			(E) Grip+ 2cm	-	Stone, Slate and Basalt Only	Bla	1 Tile	0.72 m ²	32.50 kg
02	900x900mm	10mm	(N) Natural	-	All Colours Shown	Bla	2 Tiles	1.62 m ²	36.85 kg
			(G) Grip	Dots	All Colours Shown	Bla	2 Tiles	1.62 m ²	36.85 kg
03	600x600mm	10mm	(N) Natural	-	All Colours Shown	Bla	3 Tiles	1.08 m ²	24.20 kg
			(G) Grip	-	All Colours Shown	Bla	3 Tiles	1.08 m ²	24.20 kg
		20mm	(E) Grip+ 2cm	-	All Colours Shown	Bla	2 Tiles	0.72 m ²	33.13 kg
			(E) Grip+ 2cm	-	Stone, Slate and Basalt Only	Bla	2 Tiles	0.72 m ²	33.13 kg
04	600x300mm	10mm	(N) Natural	-	All Colours Shown	Bla	6 Tiles	1.08 m ²	24.09 kg
			(G) Grip	-	All Colours Shown	Bla	6 Tiles	1.08 m ²	24.09 kg
05	300x300mm Square Mosaic	10.5mm	(N) Natural	-	All Colours Shown	Bla	6 Sheets	0.54 m ²	11.33 kg

#	Fittings	Thickness	Finish	Structure	Availability	Class	Pcs / Box	Lm / Box	Kg / Box
06	900x60mm R/T Skirting	10mm	(N) Natural	-	All Colours Shown	Bla	7 Tiles	6.30 Lm	7.88 kg
07	600x60mm R/T Skirting	10mm	(N) Natural	-	All Colours Shown	Bla	10 Tiles	6.00 Lm	7.97 kg

Note: Porcelain / Bla tiles. For more information please see the suitability advice given in the technical section. All sizes indicated are metric modular. All sizes shown are nominal. For the most up-to-date size, colour and finish availability, please visit our website - www.johnson-tiles.com. (R) Rectified.

TECHNICAL SUPPORT

Specification, Sustainability and Important Information

Product Specification

Range Name	Finish	Wall Suitability	Floor Suitability	Wet Barefoot	Material / Class
Portland	Natural	Internal and External	Internal Only	-	Porcelain / Bla
	Grip	Internal and External	Internal and External	Yes	Porcelain / Bla
	Grip+ 2cm	-	Internal and External	Yes	Porcelain / Bla

Floor Values

Finish	Colour	PTV (96)	PTV (55)	R Value	Wet Ramp	PEI	Traffic
Natural	All Colours Shown	Wet 25 - 35	-	R10	B	-	Commercial
Grip	All Colours Shown	Wet 36+	Wet 36+	R11	C	-	Commercial
Grip+ 2cm	All Colours Shown	Wet 36+	Wet 36+	R11	C	-	Commercial

Physical Properties - Porcelain / Bla

Test and Standard	Requirement	Result	Test and Standard	Requirement	Result
Length / Width EN ISO 10545-2	$\pm 0.6\% \leq \pm 2\text{mm}$	Pass	Modulus of Rupture EN ISO 10545-4	Min. 35N / mm ²	Pass
Thickness EN ISO 10545-2	$\pm 5\% \leq \pm 0.5\text{mm}$	Pass	Thermal Shock EN ISO 10545-9	Pass	Pass
Straightness of Side EN ISO 10545-2	$\pm 0.5\% \leq \pm 1.5\text{mm}$	Pass	Frost Resistance EN ISO 10545-12	Resistant	Resistant
Rectangularity EN ISO 10545-2	$\pm 0.5\% \leq \pm 2\text{mm}$	Pass	Chemical Resistance EN ISO 10545-13	Min. Class B	Pass
Surface Flatness EN ISO 10545-2	$\pm 0.5\% \leq \pm 2\text{mm}$	Pass	Stain Resistance EN ISO 10545-14	Min. Class 3	Pass
Water Absorption EN ISO 10545-3	$\leq 0.5\%$	Pass	Fire Rating		Class A1 FL Non Combustible

Sustainability Credentials

Range Name	Material / Class	EPD	Recycled Content - Tiles	Recycled Content - Packaging
Portland	Porcelain / Bla	Yes	Up to 30%	Up to 100% (Boxes Only)

Note: Due to the manufacturing process of all floor tiles there may be small variations in slip resistance. Given this, please refer to our website for the most up-to-date information. The slip resistance properties of a surface can only be maintained with the implementation of an effective regular cleaning and maintenance regime. The frequency of cleaning should be determined by the property manager based on the potential level of surface contaminants. The need for an additional regular cleaning and maintenance regime is further heightened when tiles are used for external floor and wet barefoot applications. Please contact our technical helpline, or visit our website for specification and installation advice. All floor tiles shown in this literature achieve a PTV (96) Dry 36+ test result. PTV (96): Pendulum Test Value - 4S. PTV (55): Pendulum Test Value - TRL. R Value (DIN 51130). Wet Ramp (DIN 51097). PEI: Porcelain Enamel Institute. EPD: Environmental Product Declaration. CSV: Colour Shade Variation.

Important Information

During the manufacturing process of ceramic and porcelain tiles, some variation in shade and pattern can occur. Before fixing any tiles; several boxes should be opened and their contents mixed to ensure that size, colour and patterning are acceptable.

The tiles shown in this literature are quality products and conform to BS EN 14411 as shown in the physical properties listed above.

For a comprehensive colour, size, finish and availability overview along with full technical and sustainability information for all products shown, please visit our website - www.johnson-tiles.com

- All sizes listed are metric modular.
- For specific suitability details, please contact our technical advice helpline or use the email address provided.
- Johnson Tiles Limited cannot accept responsibility for any tiles that have already been fixed.
- Johnson Tiles Limited reserves the right to change specification and availability information without prior notice.
- Nothing in these statements does or will affect the statutory rights of the consumer.

All product technical values quoted in this literature are supported by laboratory testing from our own and independent ceramic test houses. Johnson Tiles Limited are British Standard registered. To find out more, please contact our technical advice helpline on +44 (0)1782 524 111 or email: technical@johnson-tiles.com.

WHERE TO FIND US

Head Office

Harewood Street, Tunstall,
Stoke on Trent, Staffordshire,
ST6 5JZ, United Kingdom

Tel: +44 (0)1782 575 575
Email: info@johnson-tiles.com
www.johnson-tiles.com

Material Lab Studio

10 Great Titchfield Street,
London, W1W 8BB,
United Kingdom

Tel: +44 (0)20 7436 8629
Email: info@material-lab.co.uk
www.material-lab.co.uk

Factory Outlet

Tel: +44 (0)1782 524 040
Email: foutlet@johnson-tiles.com
www.outlet.johnson-tiles.com

Customer Services

Tel: +44 (0)1782 524 000
Email: sales@johnson-tiles.com
8:30am - 4:30pm (Monday - Friday)

Order A Sample

Tel: +44 (0)1782 524 043
Email: samples@johnson-tiles.com

Technical Advice Helpline

Tel: +44 (0)1782 524 111
Email: technical@johnson-tiles.com

Updated: December 2024



www.johnson-tiles.com | [f](#) [X](#) [G](#) [d](#) [P](#) [in](#) [v](#)

© 2024 Johnson Tiles Limited