

REBUS

PORCELAIN | FLOOR AND WALL TILES

CONCRETE ABSOLUTE



www.johnson-tiles.com

© 2024 Johnson Tiles Limited

Est. 1901
**JOHNSON
TILES**

REBUS



SIX COLOURS

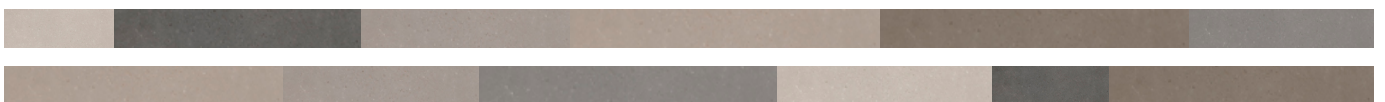


FIVE SIZES



THREE FINISHES

Rebus offers a selection of concrete effect porcelain tiles showcasing neutral and grey tones. The cool colour palette and speckled effect design make for a versatile range that looks as at home outdoors as it does inside. With sizes available from 600x300mm to 1200x1200mm, Rebus creates a sense of space and sophistication. Grip and 2cm Grip+ achieve a PTV 36+ slip resistance rating, perfect for any setting.





Pumice Natural 1200x1200x10mm - REB01N



Flint Natural 1200x600x10mm - REB04N



Pebble Natural 900x900x10mm - REB03N

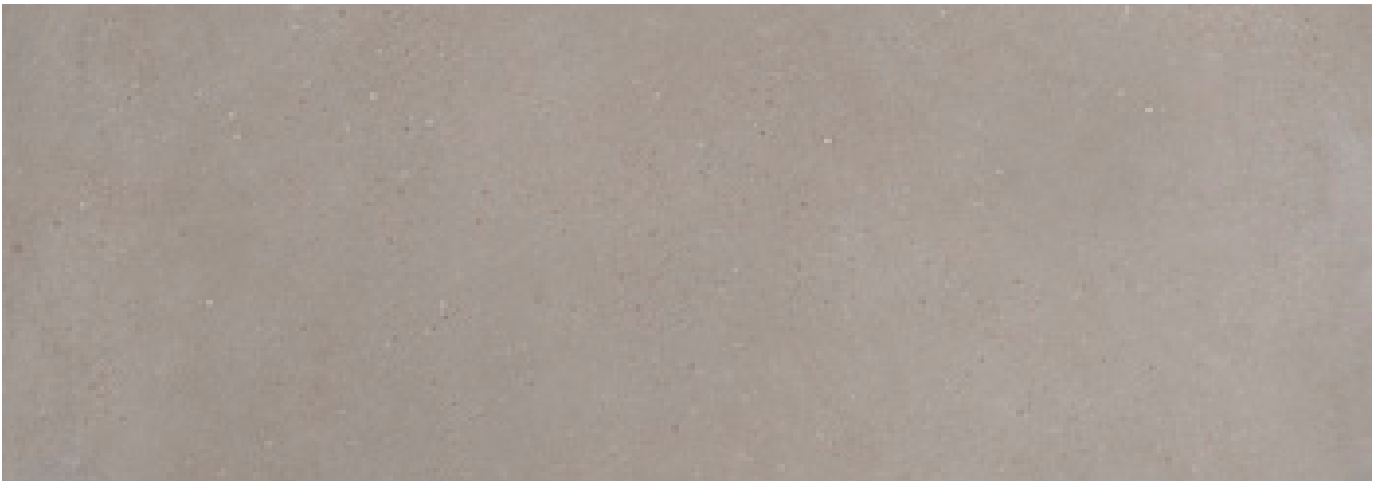
COLOURS AND PRODUCT CODES

V2: Low to Moderate Shade Variation



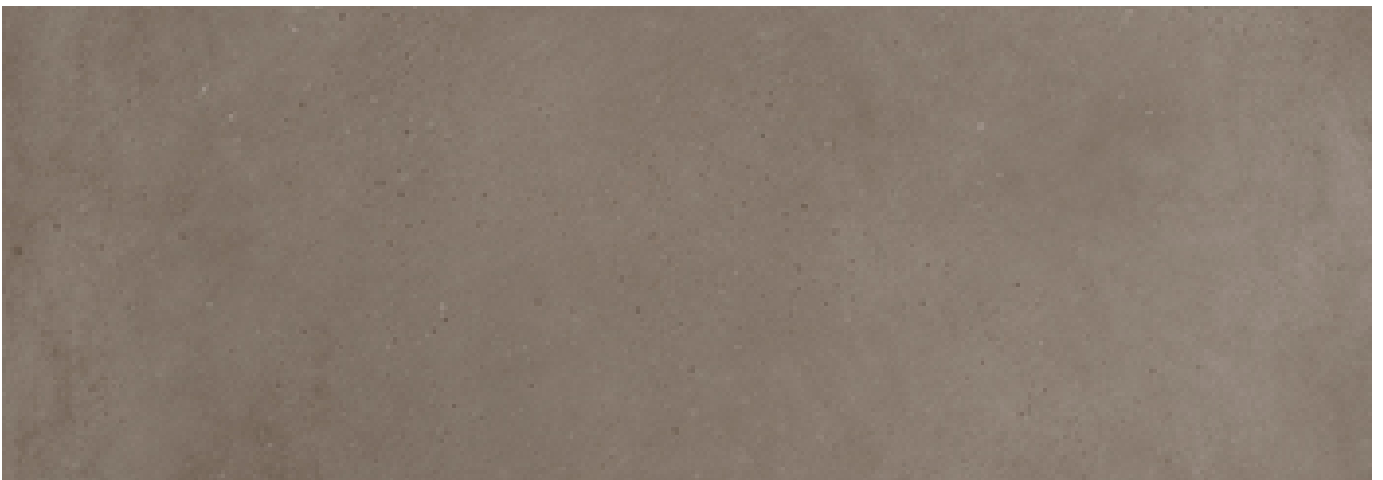
PUMICE LRV: 53

Product Code: N REB01N + G RED01G | Fitting Code: N REB1NS



CLAY LRV: 32

Product Code: N REB02N + G RED02G + E RED02E | Fitting Code: N REB2NS



PEBBLE LRV: 24

Product Code: N REB03N + G RED03G + E RED03E | Fitting Code: N REB3NS

COLOURS AND PRODUCT CODES

V2: Low to Moderate Shade Variation



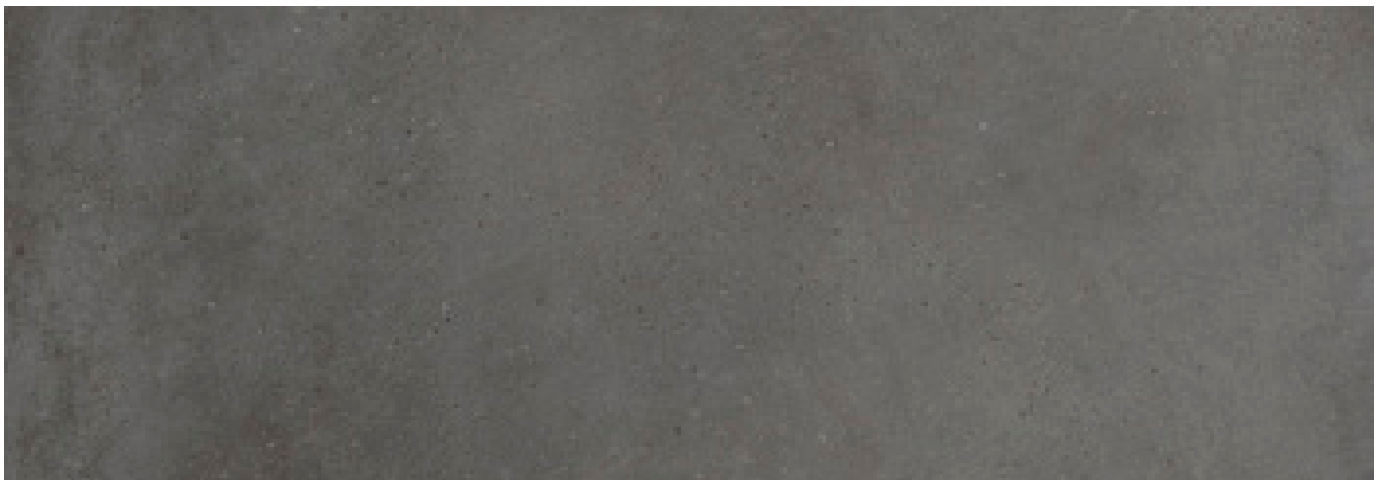
FLINT LRV: 40

Product Code: N REB04N + G RED04G + E RED04E | Fitting Code: N REB4NS



PLATINUM LRV: 29

Product Code: N REB05N + G RED05G + E RED05E | Fitting Code: N REB5NS

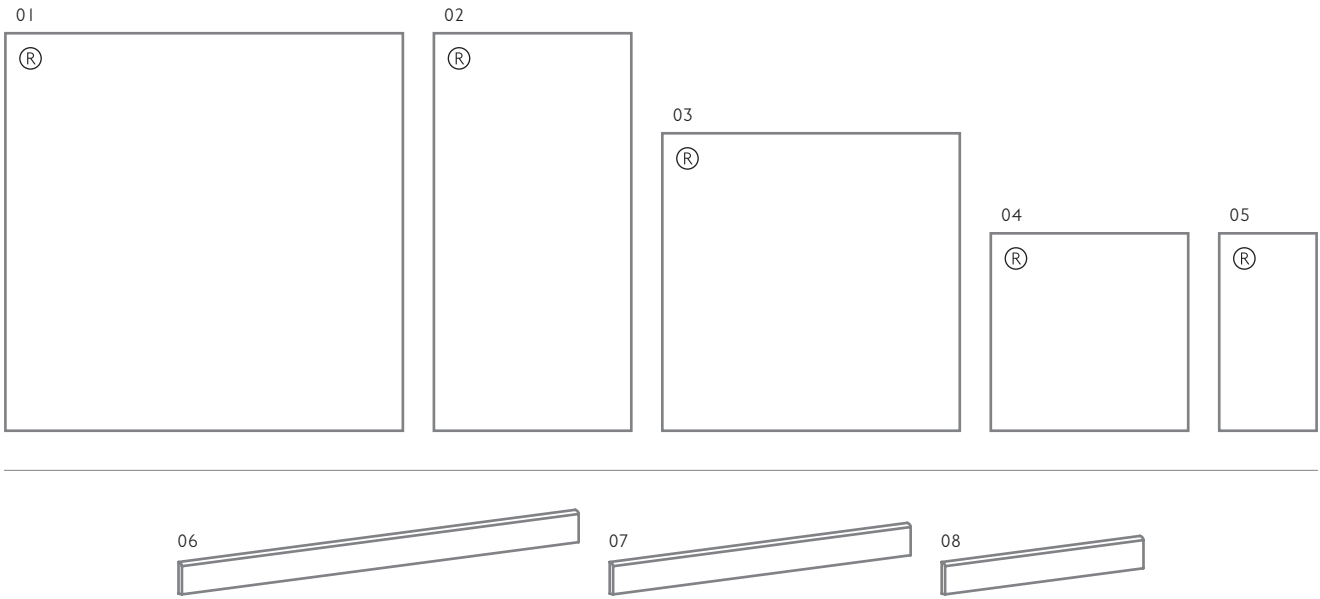


MERCURY LRV: 19

Product Code: N REB06N + G RED06G | Fitting Code: N REB6NS

SIZE FORMATS AND AVAILABILITY

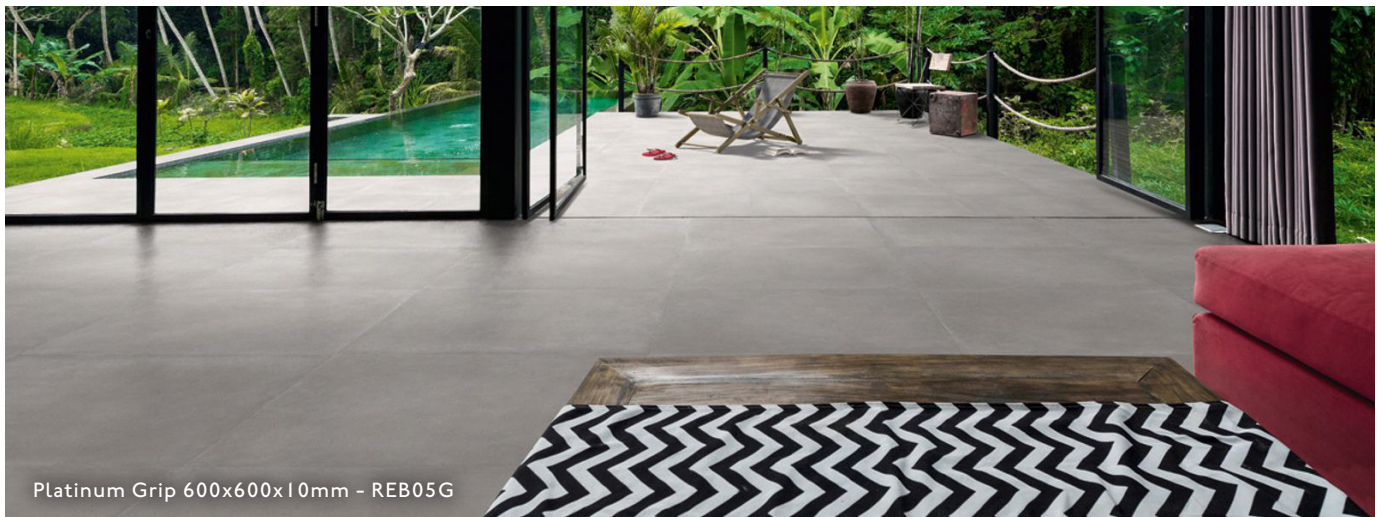
Size Options and Packing Information



| # | Size Format | Thickness | Finish | Availability | Class | Pcs / Box | M ² / Box | Kg / Box |
|----|-------------|-----------|-----------|---------------------------------------|-------|-----------|----------------------|----------|
| 01 | 1200x1200mm | 6.5mm | Natural | All Colours Shown | Bla | 2 Tiles | 2.88 m ² | 45.88 kg |
| 02 | 1200x600mm | 6.5mm | Natural | All Colours Shown | Bla | 4 Tiles | 2.88 m ² | 45.71 kg |
| 03 | 900x900mm | 10mm | Natural | All Colours Shown | Bla | 2 Tiles | 1.62 m ² | 37.96 kg |
| | | 20mm | Grip+ 2cm | Clay, Pebble, Flint and Platinum Only | Bla | 1 Tile | 0.81 m ² | 37.43 kg |
| 04 | 600x600mm | 10mm | Natural | All Colours Shown | Bla | 3 Tiles | 1.08 m ² | 24.93 kg |
| | | 20mm | Grip | All Colours Shown | Bla | 3 Tiles | 1.08 m ² | 24.93 kg |
| 05 | 600x300mm | 10mm | Grip+ 2cm | Clay, Pebble, Flint and Platinum Only | Bla | 2 Tile | 0.72 m ² | 33.15 kg |
| | | 10mm | Natural | All Colours Shown | Bla | 6 Tiles | 1.08 m ² | 24.60 kg |

| # | Fittings | Thickness | Finish | Availability | Class | Pcs / Box | Lm / Box | Kg / Box |
|----|------------------------|-----------|---------|-------------------|-------|-----------|----------|----------|
| 06 | 1200x60mm R/T Skirting | 6.5mm | Natural | All Colours Shown | Bla | 8 Tiles | 9.60 lm | 8.96 kg |
| 07 | 900x60mm R/T Skirting | 10mm | Natural | All Colours Shown | Bla | 7 Tiles | 6.30 lm | 10.15 kg |
| 08 | 600x60mm R/T Skirting | 10mm | Natural | All Colours Shown | Bla | 10 Tiles | 6.00 lm | 8.31 kg |

Note: Porcelain / Bla tiles. For more information please see the suitability advice given in the technical section. All sizes indicated are metric modular. All sizes shown are nominal. For the most up-to-date size, colour and finish availability, please visit our website - www.johnson-tiles.com. (R) Rectified.

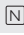

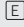


Platinum Grip 600x600x10mm - REB05G




TECHNICAL SUPPORT

Specification, Sustainability and Important Information













Product Specification

| Range Name | Finish | Wall Suitability | Floor Suitability | Wet Barefoot | Material / Class |
|------------|---|-----------------------|-----------------------|--------------|------------------|
| Rebus |  Natural | Internal and External | Internal Only | - | Porcelain / Bla |
| |  Grip | Internal and External | Internal and External | Yes | Porcelain / Bla |
| |  Grip+ 2cm | - | Internal and External | Yes | Porcelain / Bla |

Floor Values

| Finish | Colour | PTV (96) | PTV (55) | R Value | Wet Ramp | PEI | Traffic |
|---|-------------------|-------------|----------|---------|----------|-----|------------|
|  Natural | All Colours Shown | Wet 25 - 35 | - | R10 | B | - | Commercial |
|  Grip | All Colours Shown | Wet 36+ | Wet 36+ | R11 | C | - | Commercial |
|  Grip+ 2cm | All Colours Shown | Wet 36+ | Wet 36+ | R11 | C | - | Commercial |

Physical Properties - Porcelain / Bla

| Test and Standard | Requirement | Result | Test and Standard | Requirement | Result |
|---|-----------------------------------|--------|--|----------------------------|--------------------------------|
|  Length / Width EN ISO 10545-2 | $\pm 0.6\% \leq \pm 2\text{mm}$ | Pass |  Modulus of Rupture EN ISO 10545-4 | Min. 35N / mm ² | Pass |
|  Thickness EN ISO 10545-2 | $\pm 5\% \leq \pm 0.5\text{mm}$ | Pass |  Thermal Shock EN ISO 10545-9 | Pass | Pass |
|  Straightness of Side EN ISO 10545-2 | $\pm 0.5\% \leq \pm 1.5\text{mm}$ | Pass |  Frost Resistance EN ISO 10545-12 | Resistant | Resistant |
|  Rectangularity EN ISO 10545-2 | $\pm 0.5\% \leq \pm 2\text{mm}$ | Pass |  Chemical Resistance EN ISO 10545-13 | Min. Class B | Pass |
|  Surface Flatness EN ISO 10545-2 | $\pm 0.5\% \leq \pm 2\text{mm}$ | Pass |  Stain Resistance EN ISO 10545-14 | Min. Class 3 | Pass |
|  Water Absorption EN ISO 10545-3 | $\leq 0.5\%$ | Pass |  Fire Rating | | Class A1 FL Non Combustible |

Sustainability Credentials

| Range Name | Material / Class | EPD | Recycled Content - Tiles | Recycled Content - Packaging |
|------------|------------------|-----|--------------------------|------------------------------|
| Rebus | Porcelain / Bla | Yes | Up to 30% | Up to 100% (Boxes Only) |

Note: Due to the manufacturing process of all floor tiles there may be small variations in slip resistance. Given this, please refer to our website for the most up-to-date information. The slip resistance properties of a surface can only be maintained with the implementation of an effective regular cleaning and maintenance regime. The frequency of cleaning should be determined by the property manager based on the potential level of surface contaminants. The need for an additional regular cleaning and maintenance regime is further heightened when tiles are used for external floor and wet barefoot applications. Please contact our technical helpline, or visit our website for specification and installation advice. All floor tiles shown in this literature achieve a PTV (96) Dry 36+ test result. PTV (96): Pendulum Test Value - 4S. PTV (55): Pendulum Test Value - TRL. R Value (DIN 51130). Wet Ramp (DIN 51097). PEI: Porcelain Enamel Institute. EPD: Environmental Product Declaration. CSV: Colour Shade Variation.

Important Information

During the manufacturing process of ceramic and porcelain tiles, some variation in shade and pattern can occur. Before fixing any tiles; several boxes should be opened and their contents mixed to ensure that size, colour and patterning are acceptable.

The tiles shown in this literature are quality products and conform to BS EN 14411 as shown in the physical properties listed above.

For a comprehensive colour, size, finish and availability overview along with full technical and sustainability information for all products shown, please visit our website - www.johnson-tiles.com

- All sizes listed are metric modular.
- For specific suitability details, please contact our technical advice helpline or use the email address provided.
- Johnson Tiles Limited cannot accept responsibility for any tiles that have already been fixed.
- Johnson Tiles Limited reserves the right to change specification and availability information without prior notice.
- Nothing in these statements does or will affect the statutory rights of the consumer.

All product technical values quoted in this literature are supported by laboratory testing from our own and independent ceramic test houses. Johnson Tiles Limited are British Standard registered. To find out more, please contact our technical advice helpline on +44 (0)1782 524 111 or email: technical@johnson-tiles.com.

WHERE TO FIND US

Head Office

Harewood Street, Tunstall,
Stoke on Trent, Staffordshire,
ST6 5JZ, United Kingdom

Tel: +44 (0)1782 575 575
Email: info@johnson-tiles.com
www.johnson-tiles.com

Material Lab Studio

10 Great Titchfield Street,
London, W1W 8BB,
United Kingdom

Tel: +44 (0)20 7436 8629
Email: info@material-lab.co.uk
www.material-lab.co.uk

Factory Outlet

Tel: +44 (0)1782 524 040
Email: foutlet@johnson-tiles.com
www.outlet.johnson-tiles.com

Customer Services

Tel: +44 (0)1782 524 000
Email: sales@johnson-tiles.com
8:30am - 4:30pm (Monday - Friday)

Order A Sample

Tel: +44 (0)1782 524 043
Email: samples@johnson-tiles.com

Technical Advice Helpline

Tel: +44 (0)1782 524 111
Email: technical@johnson-tiles.com

Updated: December 2024



www.johnson-tiles.com | [f](#) [X](#) [G](#) [d](#) [P](#) [in](#) [v](#)

© 2024 Johnson Tiles Limited