

# BARBROOK

GLAZED CERAMIC | WALL TILES

COLOUR STRUCTURE ABSOLUTE



[www.johnson-tiles.com](http://www.johnson-tiles.com)

© 2024 Johnson Tiles Limited

Est. 1901  
**JOHNSON  
TILES**

# BARBROOK



EIGHT COLOURS

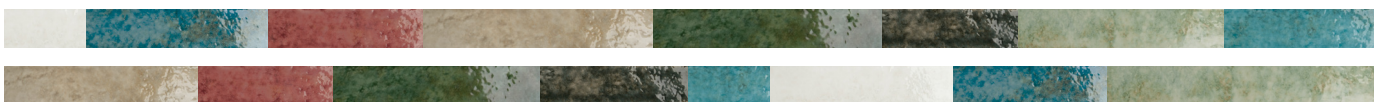


TWO SIZES



ONE FINISH

Introducing Barbrook, a distinctive blend of rustic charm and modern design. This glazed ceramic wall tile collection offers two stylish small format sizes: 250x50mm and the trendy 250x125mm KitKat-style strips. With a versatile selection of eight colours, including chic Mint, vibrant Marine, and dusky Chestnut, Barbrook seamlessly fits into any design scheme. Each tile features a gloss finish to enhance light reflection in the room, while the irregular edges provide a hand-crafted aesthetic. The high shade variation ensures a truly unique and individualised finish, breathing life into any interior space. Get creative with a variety of layout patterns, including herringbone and basket weave.







Chestnut Gloss 250x50x8.5mm - BAR08A  
 Chestnut Strips Gloss 250x125x10.5mm - BAR08D



Sand Gloss 250x50x8.5mm - BAR02A  
 Sand Strips Gloss 250x125x10.5mm - BAR02D



Marine Gloss 250x50x8.5mm - BAR05A  
 Marine Strips Gloss 250x125x10.5mm - BAR05D


## COLOURS AND PRODUCT CODES

V4: High Shade Variation

---



**PEARL** LRV: 73

Product Code:  BAR01A



**PEARL - STRIPS** LRV: 73

Product Code:  BAR01D



**SAND** LRV: 32

Product Code:  BAR02A



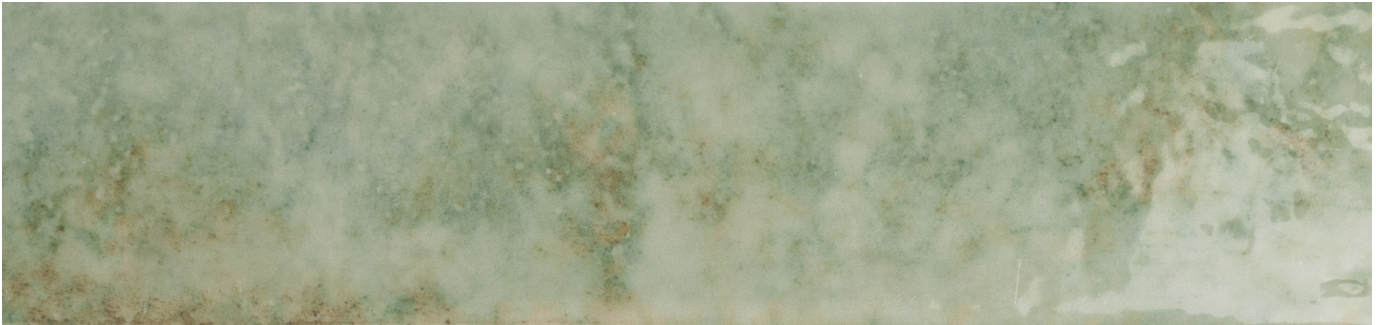
**SAND - STRIPS** LRV: 32

Product Code:  BAR02D

# COLOURS AND PRODUCT CODES

V4: High Shade Variation

---



**MINT** LRV: 36

Product Code:  BAR03A



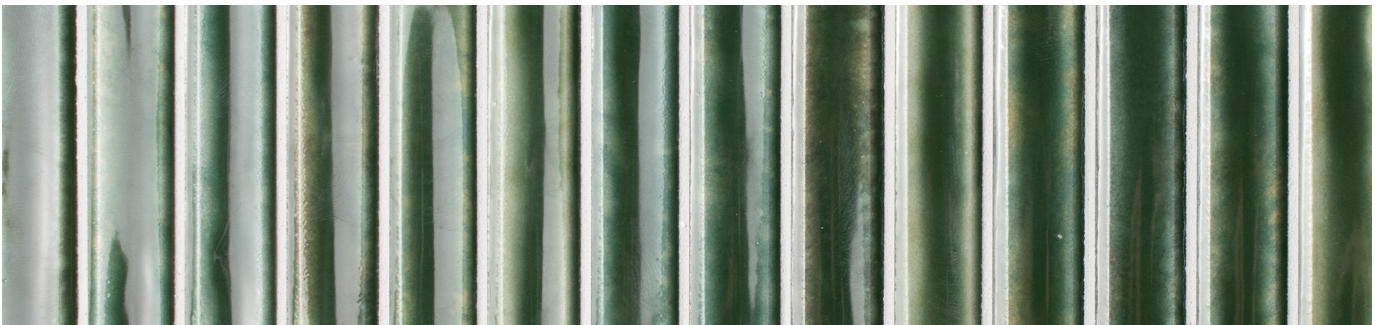
**MINT - STRIPS** LRV: 36

Product Code:  BAR03D



**FERN** LRV: 16

Product Code:  BAR04A



**FERN - STRIPS** LRV: 16

Product Code:  BAR04D


# COLOURS AND PRODUCT CODES

V4: High Shade Variation

---



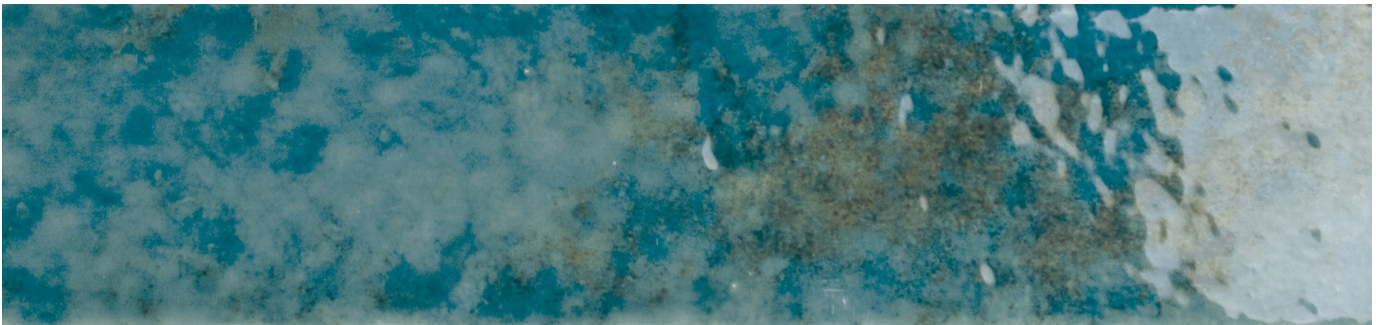
**MARINE** LRV: 26

Product Code:  BAR05A




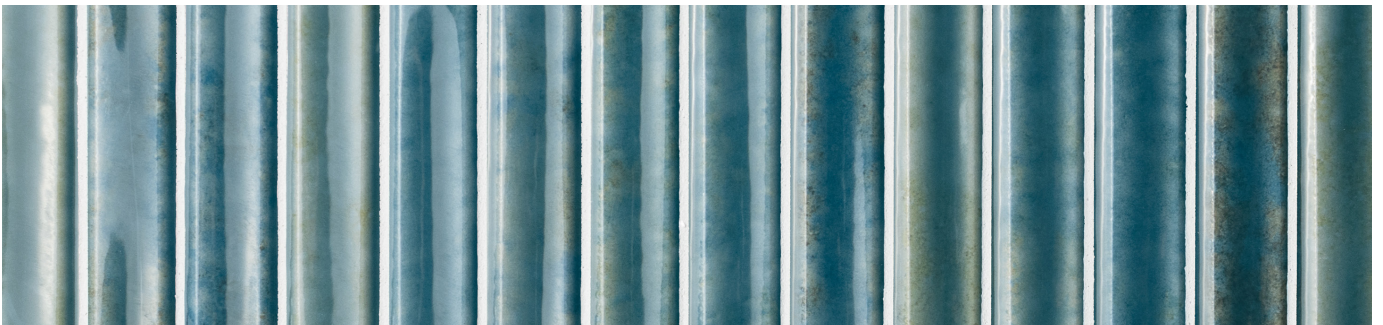
**MARINE - STRIPS** LRV: 26

Product Code:  BAR05D



**OCEAN** LRV: 13

Product Code:  BAR06A



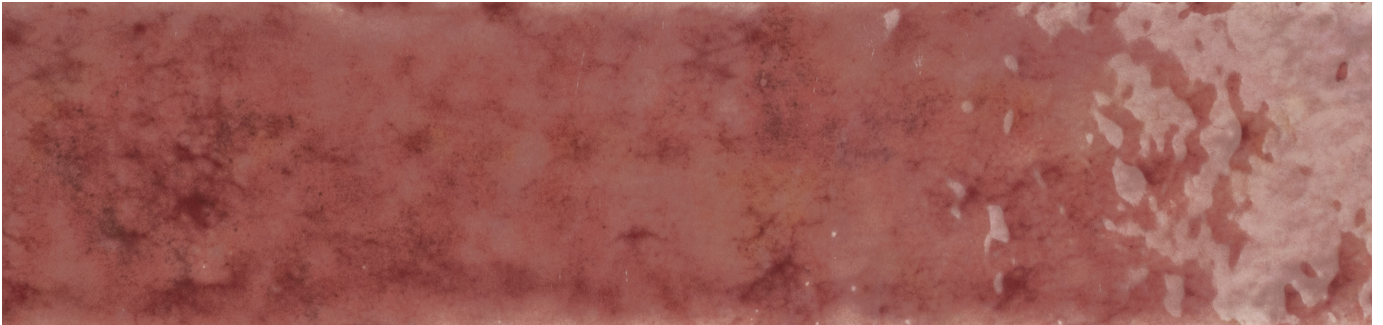
**OCEAN - STRIPS** LRV: 13

Product Code:  BAR06D

# COLOURS AND PRODUCT CODES

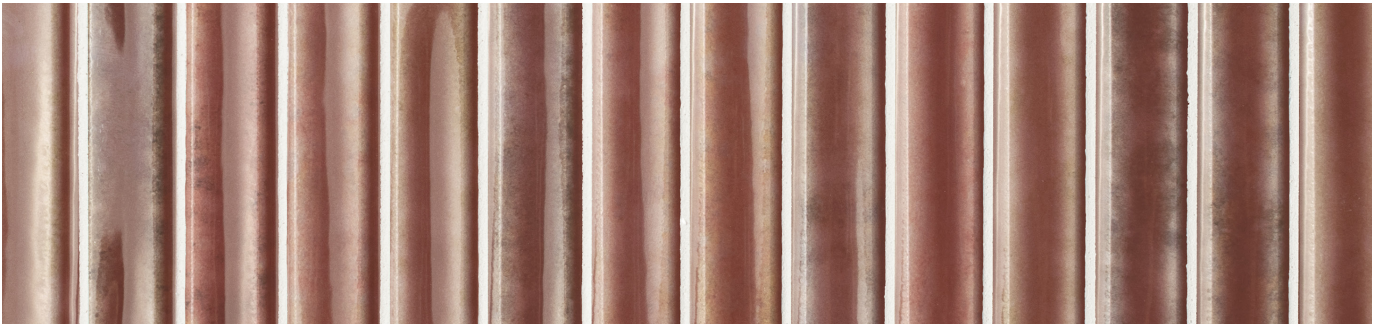
V4: High Shade Variation

---



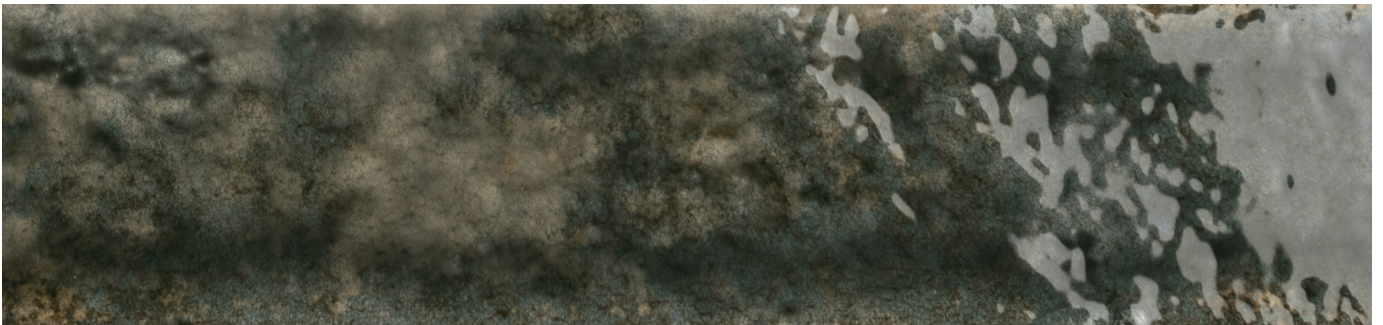
**BURGUNDY** LRV: 13

Product Code:  BAR07A



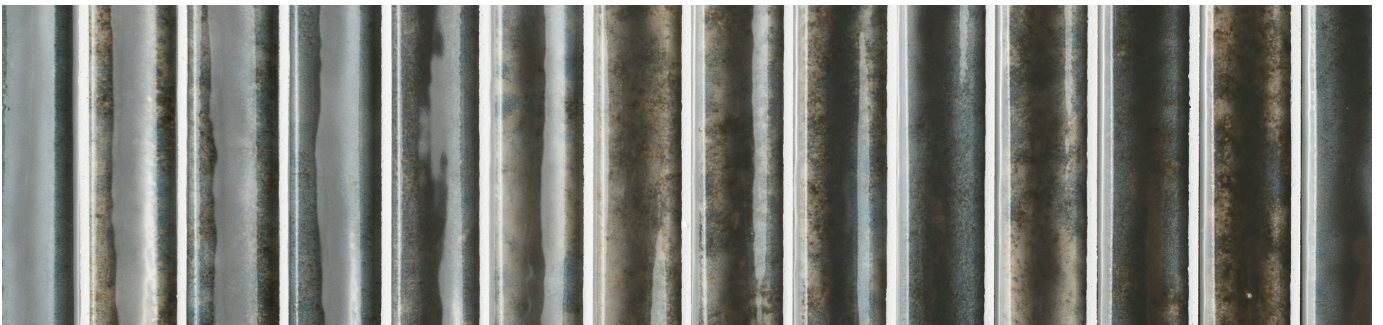
**BURGUNDY - STRIPS** LRV: 13

Product Code:  BAR07D



**CHESTNUT** LRV: 12

Product Code:  BAR08A



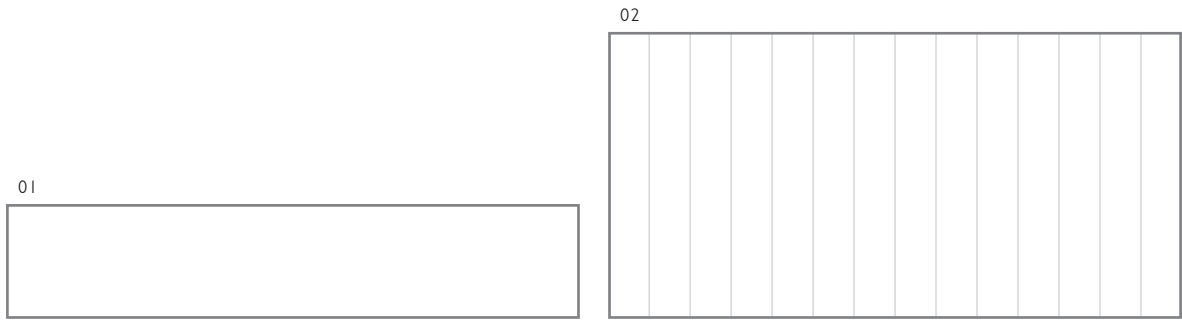
**CHESTNUT - STRIPS** LRV: 12

Product Code:  BAR08D



# SIZE FORMATS AND AVAILABILITY

Size Options and Packing Information



#	Size Format	Thickness	Finish	Structure	Availability	Class	Pcs / Box	M <sup>2</sup> / Box	Kg / Box
01	250x50mm	8.5mm	Gloss	-	All Colours Shown	BIII	60 Tiles	0.75 m <sup>2</sup>	9.84 kg
02	250x125mm	10.5mm	Gloss	Strips	All Colours Shown	BIII	14 Tiles	0.43 m <sup>2</sup>	7.25 kg

Note: Glazed Ceramic / BIII tiles. For more information please see the suitability advice given in the technical section. All sizes indicated are metric modular. All sizes shown are nominal. For the most up-to-date size, colour and finish availability, please visit our website - [www.johnson-tiles.com](http://www.johnson-tiles.com).



Sand Strips Gloss 250x125x10.5mm - BAR02D














# TECHNICAL SUPPORT

Specification, Sustainability and Important Information

## Product Specification

Range Name	Finish	Structure	Wall Suitability	Floor Suitability	Wet Barefoot	Material / Class
Barbrook	Gloss	-	Internal Only	-	-	Glazed Ceramic / BIII
		Strips	Internal Only	-	-	Glazed Ceramic / BIII

## Physical Properties - Glazed Ceramic / BIII

Test and Standard	Requirement	Result	Test and Standard	Requirement	Result
 <b>Length / Width</b> EN ISO 10545-2	$\pm 0.5\% \leq \pm 2\text{mm}$	Pass	 <b>Modulus of Rupture</b> EN ISO 10545-4	Min. 15N / mm <sup>2</sup>	Pass
 <b>Thickness</b> EN ISO 10545-2	$\pm 10\% \leq \pm 0.5\text{mm}$	Pass	 <b>Thermal Shock</b> EN ISO 10545-9	Pass	Pass
 <b>Straightness of Side</b> EN ISO 10545-2	$\pm 0.3\% \leq \pm 1.5\text{mm}$	Pass	 <b>Frost Resistance</b> EN ISO 10545-12	-	Not Suitable
 <b>Rectangularity</b> EN ISO 10545-2	$\pm 0.5\% \leq \pm 2\text{mm}$	Pass	 <b>Chemical Resistance</b> EN ISO 10545-13	Min. Class B	Class A
 <b>Surface Flatness</b> EN ISO 10545-2	$\pm 0.5\% \leq \pm 2\text{mm}$	Pass	 <b>Stain Resistance</b> EN ISO 10545-14	Min. Class 3	Class 5
 <b>Water Absorption</b> EN ISO 10545-3	10% to 20%	> 10%	 <b>Fire Rating</b>		Class A1 Non Combustible
 <b>Weight / M<sup>2</sup></b>	13.12 kg 8.5mm Thick	16.87 kg 10.5mm Thick			

## Sustainability Credentials

Range Name	Material / Class	EPD	Recycled Content - Tiles	Recycled Content - Packaging
Barbrook	Glazed Ceramic / BIII	Yes	Up to 60%	Up to 100% (Boxes Only)

**Note:** Please contact our technical helpline, or visit our website for specification and installation advice.  
EPD: Environmental Product Declaration. CSV: Colour Shade Variation.

## Important Information

During the manufacturing process of ceramic and porcelain tiles, some variation in shade and pattern can occur. Before fixing any tiles; several boxes should be opened and their contents mixed to ensure that size, colour and patterning are acceptable.

The tiles shown in this literature are quality products and conform to BS EN 14411 as shown in the physical properties listed above.

For a comprehensive colour, size, finish and availability overview along with full technical and sustainability information for all products shown, please visit our website - [www.johnson-tiles.com](http://www.johnson-tiles.com)

- All sizes listed are metric modular.
- For specific suitability details, please contact our technical advice helpline or use the email address provided.
- Johnson Tiles Limited cannot accept responsibility for any tiles that have already been fixed.
- Johnson Tiles Limited reserves the right to change specification and availability information without prior notice.
- Nothing in these statements does or will affect the statutory rights of the consumer.

All product technical values quoted in this literature are supported by laboratory testing from our own and independent ceramic test houses. Johnson Tiles Limited are British Standard registered. To find out more, please contact our technical advice helpline on +44 (0)1782 524 111 or email: [ddunlop@johnson-tiles.com](mailto:ddunlop@johnson-tiles.com).

## WHERE TO FIND US

### Head Office

Harewood Street, Tunstall,  
Stoke on Trent, Staffordshire,  
ST6 5JZ, United Kingdom

Tel: +44 (0)1782 575 575  
Email: [info@johnson-tiles.com](mailto:info@johnson-tiles.com)  
[www.johnson-tiles.com](http://www.johnson-tiles.com)

---

### Material Lab Studio

10 Great Titchfield Street,  
London, W1W 8BB,  
United Kingdom

Tel: +44 (0)20 7436 8629  
Email: [info@material-lab.co.uk](mailto:info@material-lab.co.uk)  
[www.material-lab.co.uk](http://www.material-lab.co.uk)

---

### Factory Outlet

Tel: +44 (0)1782 524 040  
Email: [foutlet@johnson-tiles.com](mailto:foutlet@johnson-tiles.com)  
[www.outlet.johnson-tiles.com](http://www.outlet.johnson-tiles.com)

---

### Customer Services

Tel: +44 (0)1782 524 000  
Email: [sales@johnson-tiles.com](mailto:sales@johnson-tiles.com)  
8:30am - 5:00pm (Monday - Friday)

---

### Order A Sample

Tel: +44 (0)1782 524 043  
Email: [samples@johnson-tiles.com](mailto:samples@johnson-tiles.com)

---

### Technical Advice Helpline

Tel: +44 (0)1782 524 111  
Email: [ddunlop@johnson-tiles.com](mailto:ddunlop@johnson-tiles.com)

---

Launched: September 2024



[www.johnson-tiles.com](http://www.johnson-tiles.com) | [f](#) [X](#) [G](#) [d](#) [P](#) [in](#) [v](#)

© 2024 Johnson Tiles Limited