

MINERALS

PORCELAIN AND CERAMIC | FLOOR AND WALL TILES

STONE STRUCTURE MOSAIC ABSOLUTE



www.johnson-tiles.com

© 2024 Johnson Tiles Limited

Est. 1901
**JOHNSON
TILES**

MINERALS



SIX COLOURS



FIFTEEN SIZES



FOUR FINISHES

Minerals offers an on-trend colour palette of six natural shades from Chalk to Charcoal, showcasing an elegant stone effect, perfect for tranquil spaces. Varied finishes include Natural, Bush Hammered, Grip and Grip+ 2cm to deliver on performance. With a wide selection of Eleven size-formats available, ranging from strips of 600x50mm all the way up to 2700x1200mm, Minerals is versatile in its applications, with co-ordinating mosaics and skirtings also featured.

Experiment with texture with the Minerals ceramic wall tiles. Geometric patterning comes to the fore in three varied structures available across four neutral tones of Chalk, Dolomite, Limestone, and Flint. Dot structure adds soft circular detailing, Hexagon structure allows the interplay of light across its tactile surface, and Linear structure provides ridged profiling. Minerals is perfect for adding dimension to create a contemporary feature in any commercial interior.





Dolomite Hexagon Natural 900x300x11mm - MIN02H



Chalk Natural 300x300mm Mixed Strip Mosaic - MIN1NM



Limestone Grip 1200x600x9mm - MIN03G

COLOURS AND PRODUCT CODES

V2: Low to Moderate Shade Variation



CHALK LRV: 68

Product Code (Bla): N MIN01N + B MIN01B + G MIN01G + E MIN01E | Product Code (BIII Ductile): N MIN1DN

Mosaic Code (Bla): N MIN1NM + B MIN1BM + G MIN1GM | Fitting Code (Bla): N MIN1NS + B MIN1BS



DOLOMITE LRV: 53

Product Code (Bla): N MIN02N + B MIN02B + G MIN02G + E MIN02E | Product Code (BIII Ductile): N MIN2DN

Mosaic Code (Bla): N MIN2NM + B MIN2BM + G MIN2GM | Fitting Code (Bla): N MIN2NS + B MIN2BS



LIMESTONE LRV: 41

Product Code (Bla): N MIN03N + B MIN03B + G MIN03G + E MIN03E | Product Code (BIII Ductile): N MIN3DN

Mosaic Code (Bla): N MIN3NM + B MIN3BM + G MIN3GM | Fitting Code (Bla): N MIN3NS + B MIN3BS

COLOURS AND PRODUCT CODES

V2: Low to Moderate Shade Variation



PEBBLE LRV: 42

Product Code (Bla): MIN06N + MIN06B + MIN06G + MIN06E | Product Code (BIII Ductile): MIN6DN

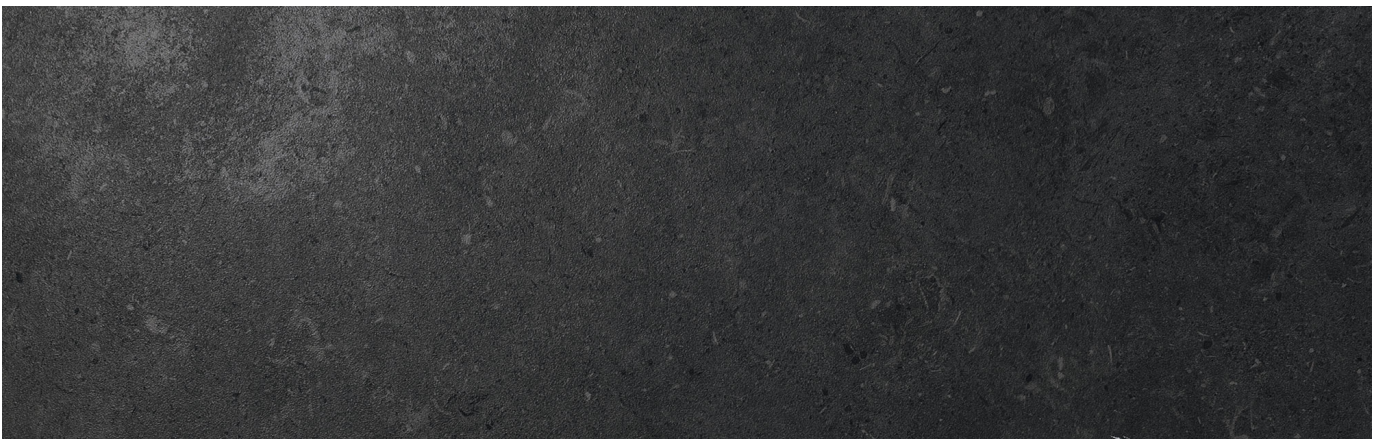
Mosaic Code (Bla): MIN6NM + MIN6BM + MIN6GM | Fitting Code (Bla): MIN4NS + MIN6BS



FLINT LRV: 32

Product Code (Bla): MIN04N + MIN04B + MIN04G + MIN04E | Product Code (BIII Ductile): MIN4DN

Mosaic Code (Bla): MIN4NM + MIN4BM + MIN4GM | Fitting Code (Bla): MIN4NS + MIN4BS



CHARCOAL LRV: 11

Product Code (Bla): MIN07N + MIN07B + MIN07G | Product Code (BIII Ductile): MIN7DN

Mosaic Code (Bla): MIN7NM + MIN7BM + MIN7GM | Fitting Code (Bla): MIN7NS + MIN7BS

COLOURS AND PRODUCT CODES

V2: Low to Moderate Shade Variation



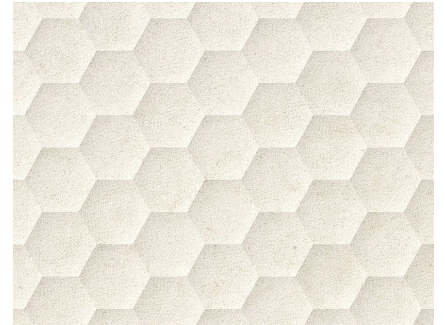
CHALK - DOT LRV: 68

Product Code (BIII): **N** MIN01D



CHALK - LINEAR LRV: 68

Product Code (BIII): **N** MIN01L



CHALK - HEXAGON LRV: 68

Product Code (BIII): **N** MIN01H



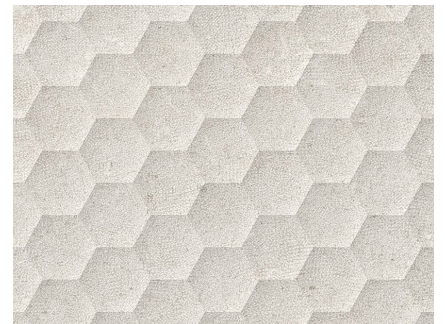
DOLOMITE - DOT LRV: 53

Product Code (BIII): **N** MIN02D



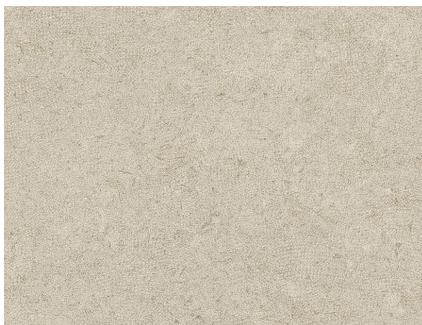
DOLOMITE - LINEAR LRV: 53

Product Code (BIII): **N** MIN02L



DOLOMITE - HEXAGON LRV: 53

Product Code (BIII): **N** MIN02H



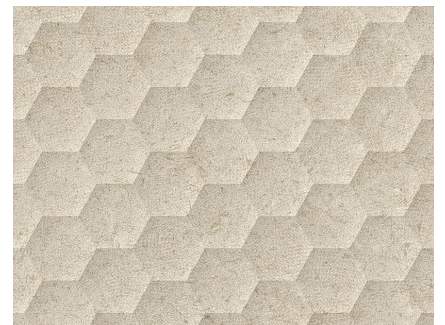
LIMESTONE - DOT LRV: 41

Product Code (BIII): **N** MIN03D



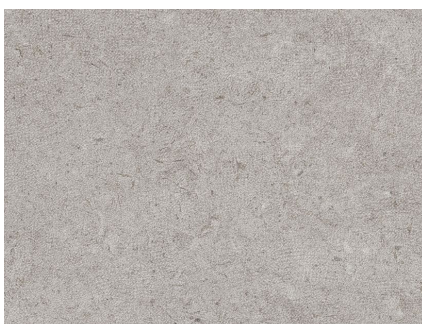
LIMESTONE - LINEAR LRV: 41

Product Code (BIII): **N** MIN03L



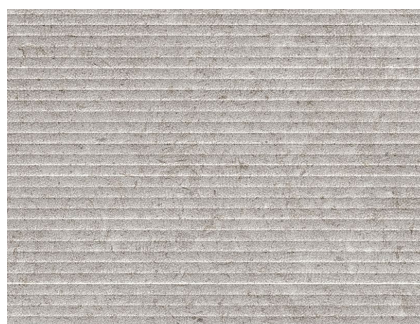
LIMESTONE - HEXAGON LRV: 41

Product Code (BIII): **N** MIN03H



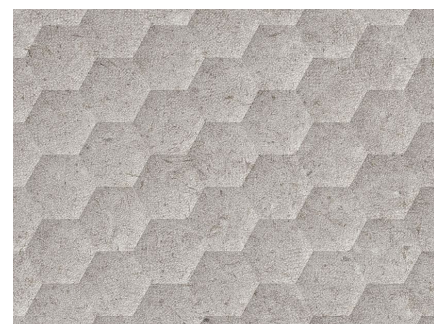
FLINT - DOT LRV: 32

Product Code (BIII): **N** MIN04D



FLINT - LINEAR LRV: 32

Product Code (BIII): **N** MIN04L

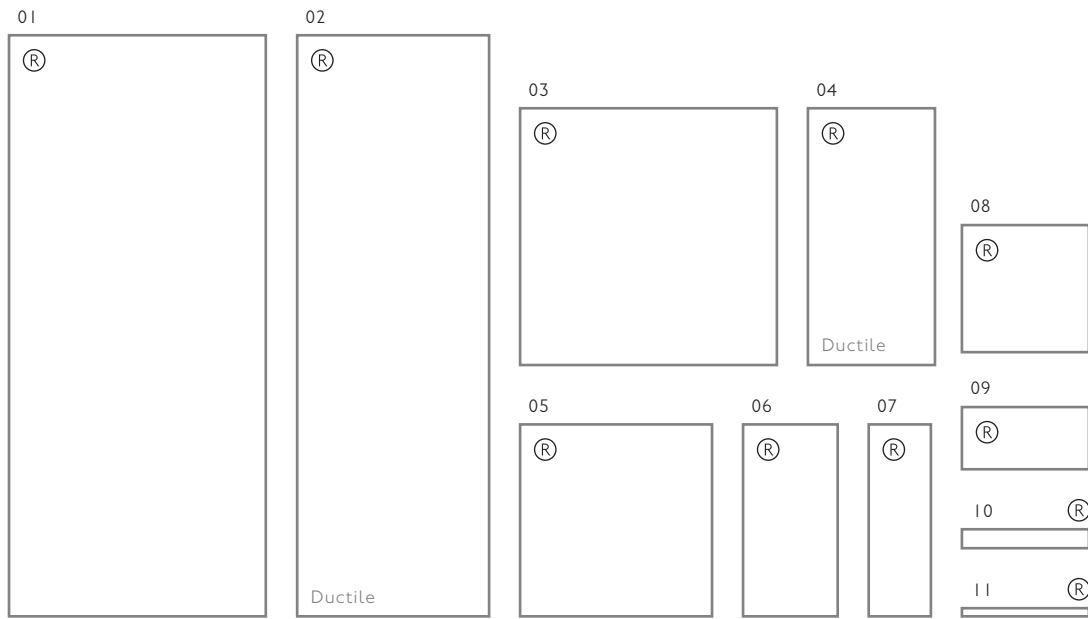


FLINT - HEXAGON LRV: 32

Product Code (BIII): **N** MIN04H

SIZE FORMATS AND AVAILABILITY

Size Options and Packing Information

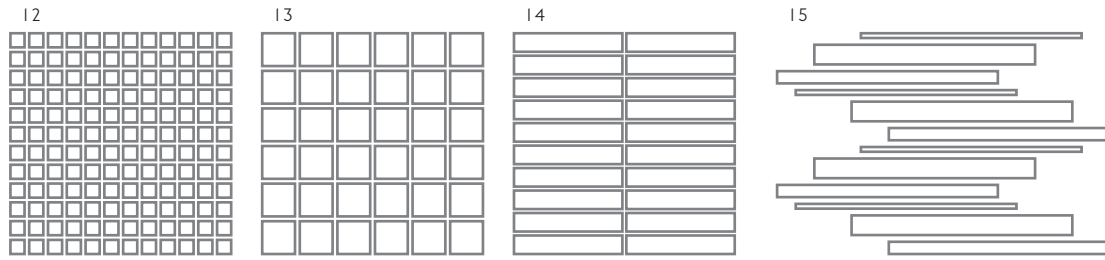


#	Size Format	Thickness	Finish	Structure	Availability	Class	Pcs / Box	M ² / Box	Kg / Box
01	2700x1200mm	6mm	(N) Natural	-	All Colours Shown	Bla	1 Tile	3.23 m ²	45.50 kg
02	2700x900mm	6mm Ductile	(N) Natural	-	All Colours Shown	Bla	1 Tile	2.42 m ²	29.04 kg
03	1200x1200mm	9mm	(N) Natural	-	All Colours Shown	Bla	1 Tile	1.44 m ²	30.50 kg
			(B) Bush Hammered	-	All Colours Shown	Bla	1 Tile	1.44 m ²	30.50 kg
			(G) Grip	-	All Colours Shown	Bla	1 Tile	1.44 m ²	30.50 kg
		20mm	(E) Grip+ 2cm	-	All Colours Shown	Bla	1 Tile	1.44 m ²	66.02 kg
04	1200x600mm	9mm	(N) Natural	-	All Colours Shown	Bla	2 Tiles	1.44 m ²	30.32 kg
			(B) Bush Hammered	-	All Colours Shown	Bla	2 Tiles	1.44 m ²	30.32 kg
			(G) Grip	-	All Colours Shown	Bla	2 Tiles	1.44 m ²	30.32 kg
		6mm Ductile	(N) Natural	-	All Colours Shown	Bla	3 Tiles	2.16 m ²	25.80kg
05	900x900mm	9mm	(N) Natural	-	All Colours Shown	Bla	2 Tiles	1.62 m ²	34.00 kg
			(B) Bush Hammered	-	All Colours Shown	Bla	2 Tiles	1.62 m ²	34.00 kg
			(G) Grip	-	All Colours Shown	Bla	2 Tiles	1.62 m ²	34.00 kg
		20mm	(E) Grip+ 2cm	-	All Colours Shown	Bla	1 Tile	0.81 m ²	37.09 kg
06	900x450mm	9mm	(N) Natural	-	All Colours Shown	Bla	3 Tiles	1.21 m ²	25.50 kg
			(B) Bush Hammered	-	All Colours Shown	Bla	3 Tiles	1.21 m ²	25.50 kg
			(G) Grip	-	All Colours Shown	Bla	3 Tiles	1.21 m ²	25.50 kg
07	900x300mm	11mm	(N) Natural	Dot	All Colours Shown	Bill	4 Tiles	1.07 m ²	17.60 kg
				Linear	All Colours Shown	Bill	4 Tiles	1.07 m ²	17.60 kg
				Hexagon	All Colours Shown	Bill	4 Tiles	1.07 m ²	17.60 kg
08	600x600mm	9mm	(N) Natural	-	All Colours Shown	Bla	3 Tiles	1.08 m ²	23.22 kg
			(B) Bush Hammered	-	All Colours Shown	Bla	3 Tiles	1.08 m ²	23.22 kg
			(G) Grip	-	All Colours Shown	Bla	3 Tiles	1.08 m ²	23.22 kg
09	600x300mm	9mm	(N) Natural	-	All Colours Shown	Bla	6 Tiles	1.08 m ²	22.00 kg
			(B) Bush Hammered	-	All Colours Shown	Bla	6 Tiles	1.08 m ²	22.00 kg
			(G) Grip	-	All Colours Shown	Bla	6 Tiles	1.08 m ²	22.00 kg
10	600x100mm	9mm	(N) Natural	-	All Colours Shown	Bla	10 Tiles	0.59 m ²	13.30 kg
			(B) Bush Hammered	-	All Colours Shown	Bla	10 Tiles	0.59 m ²	13.30 kg
			(G) Grip	-	All Colours Shown	Bla	10 Tiles	0.59 m ²	13.30 kg
11	600x50mm	9mm	(N) Natural	-	All Colours Shown	Bla	20 Tiles	0.59 m ²	13.30 kg
			(B) Bush Hammered	-	All Colours Shown	Bla	20 Tiles	0.59 m ²	13.30 kg
			(G) Grip	-	All Colours Shown	Bla	20 Tiles	0.59 m ²	13.30 kg

Note: Porcelain / Bla and Ceramic / Bill tiles. For more information please see the suitability advice given in the technical section. All sizes indicated are metric modular. All sizes shown are nominal. For the most up-to-date size, colour and finish availability, please visit our website - www.johnson-tiles.com. (R) Rectified Edge.

SIZE FORMATS AND AVAILABILITY

Size Options and Packing Information



#	Size Format	Thickness	Finish	Structure	Availability	Class	Pcs / Box	M ² / Box	Kg / Box
12	300x300mm Square Mosaic	9mm	N Natural	-	All Colours Shown	Bla	5 Sheets	0.44 m ²	9.00 kg
			B Bush Hammered	-	All Colours Shown	Bla	5 Sheets	0.44 m ²	9.00 kg
			G Grip	-	All Colours Shown	Bla	5 Sheets	0.44 m ²	9.00 kg
13	300x300mm Square Mosaic	9mm	N Natural	-	All Colours Shown	Bla	5 Sheets	0.44 m ²	9.00 kg
			B Bush Hammered	-	All Colours Shown	Bla	5 Sheets	0.44 m ²	9.00 kg
			G Grip	-	All Colours Shown	Bla	5 Sheets	0.44 m ²	9.00 kg
14	300x300mm Strip Mosaic	9mm	N Natural	-	All Colours Shown	Bla	5 Sheets	0.44 m ²	9.00 kg
			B Bush Hammered	-	All Colours Shown	Bla	5 Sheets	0.44 m ²	9.00 kg
			G Grip	-	All Colours Shown	Bla	5 Sheets	0.44 m ²	9.00 kg
15	450x300mm Strip Mosaic	9mm	N Natural	-	All Colours Shown	Bla	5 Sheets	0.44 m ²	9.00 kg
			B Bush Hammered	-	All Colours Shown	Bla	5 Sheets	0.44 m ²	9.00 kg
			G Grip	-	All Colours Shown	Bla	5 Sheets	0.44 m ²	9.00 kg

#	Fittings	Thickness	Finish	Structure	Availability	Class	Pcs / Box	Lm / Box	Kg / Box
16	1200x50mm B/T Skirting	9mm	N Natural	-	All Colours Shown	Bla	5 Tiles	6.00 lm	7.00 kg
			B Bush Hammered	-	All Colours Shown	Bla	5 Tiles	6.00 lm	7.00 kg
17	900x50mm B/T Skirting	9mm	N Natural	-	All Colours Shown	Bla	5 Tiles	4.50 lm	5.50 kg
			B Bush Hammered	-	All Colours Shown	Bla	5 Tiles	4.50 lm	5.50 kg
18	600x50mm B/T Skirting	9mm	N Natural	-	All Colours Shown	Bla	5 Tiles	3.00 lm	3.00 kg
			B Bush Hammered	-	All Colours Shown	Bla	5 Tiles	3.00 lm	3.00 kg

Note: Porcelain / Bla and Ceramic / Bill tiles. For more information please see the suitability advice given in the technical section. All sizes indicated are metric modular. All sizes shown are nominal. For the most up-to-date size, colour and finish availability, please visit our website - www.johnson-tiles.com. (R) Rectified Edge.



Flint Linear Natural 900x300x11mm - MIN04L

TECHNICAL SUPPORT

Specification, Sustainability and Important Information

Product Specification

Range Name	Finish	Wall Suitability	Floor Suitability	Wet Barefoot	Material / Class
Minerals	Natural	Internal and External	Internal Only	-	Porcelain / Bla
	Bush Hammered	Internal and External	Internal and External	Yes	Porcelain / Bla
	Grip	Internal and External	Internal and External	Yes	Porcelain / Bla
	Grip+ 2cm	-	Internal and External	Yes	Porcelain / Bla
	Natural	Internal Only	-	-	Ceramic / BIII

Floor Values

Finish	Colour	PTV (96)	PTV (55)	R Value	Wet Ramp	PEI	Traffic
Natural	All Colours Shown	Wet 25 - 35	-	R9	A	-	Commercial
Bush Hammered	All Colours Shown	Wet 36+	Wet 36+	R10	B	-	Commercial
Grip	All Colours Shown	Wet 36+	Wet 36+	R11	C	-	Commercial
Grip+ 2cm	All Colours Shown	Wet 36+	Wet 36+	R11	C	-	Commercial

Physical Properties - Porcelain / Bla

Test and Standard	Requirement	Result	Test and Standard	Requirement	Result
Length / Width EN ISO 10545-2	$\pm 0.6\% \leq \pm 2\text{mm}$	Pass	Modulus of Rupture EN ISO 10545-4	Min. 35N / mm ²	Pass
Thickness EN ISO 10545-2	$\pm 5\% \leq \pm 0.5\text{mm}$	Pass	Thermal Shock EN ISO 10545-9	Pass	Pass
Straightness of Side EN ISO 10545-2	$\pm 0.5\% \leq \pm 1.5\text{mm}$	Pass	Frost Resistance EN ISO 10545-12	Resistant	Resistant
Rectangularity EN ISO 10545-2	$\pm 0.5\% \leq \pm 2\text{mm}$	Pass	Chemical Resistance EN ISO 10545-13	Min. Class B	Pass
Surface Flatness EN ISO 10545-2	$\pm 0.5\% \leq \pm 2\text{mm}$	Pass	Stain Resistance EN ISO 10545-14	Min. Class 3	Pass
Water Absorption EN ISO 10545-3	$\leq 0.5\%$	Pass	Fire Rating		Class A I FL Non Combustible

Physical Properties - Ceramic / BIII

Test and Standard	Requirement	Result	Test and Standard	Requirement	Result
Length / Width EN ISO 10545-2	$\pm 0.5\% \leq \pm 2\text{mm}$	Pass	Modulus of Rupture EN ISO 10545-4	Min. 15N / mm ²	Pass
Thickness EN ISO 10545-2	$\pm 10\% \leq \pm 0.5\text{mm}$	Pass	Thermal Shock EN ISO 10545-9	Pass	Pass
Straightness of Side EN ISO 10545-2	$\pm 0.3\% \leq \pm 1.5\text{mm}$	Pass	Frost Resistance EN ISO 10545-12	-	Not Suitable
Rectangularity EN ISO 10545-2	$\pm 0.5\% \leq \pm 2\text{mm}$	Pass	Chemical Resistance EN ISO 10545-13	Min. Class B	Pass
Surface Flatness EN ISO 10545-2	$\pm 0.5\% \leq \pm 2\text{mm}$	Pass	Stain Resistance EN ISO 10545-14	Min. Class 3	Pass
Water Absorption EN ISO 10545-3	10% to 20%	Pass	Fire Rating		Class A I Non Combustible

Sustainability Credentials

Range Name	Material / Class	EPD	Recycled Content - Tiles	Recycled Content - Packaging
Minerals	Glazed Porcelain / Bla	Yes	Up to 30%	Up to 100% (Boxes Only)
	Glazed Ceramic / BIII	Yes	Up to 30%	Up to 100% (Boxes Only)

Note: Due to the manufacturing process of all floor tiles there may be small variations in slip resistance. Given this, please refer to our website for the most up-to-date information. The slip resistance properties of a surface can only be maintained with the implementation of an effective regular cleaning and maintenance regime. The frequency of cleaning should be determined by the property manager based on the potential level of surface contaminants. The need for an additional regular cleaning and maintenance regime is further heightened when tiles are used for external floor and wet barefoot applications. Please contact our technical helpline, or visit our website for specification and installation advice. All floor tiles shown in this literature achieve a PTV (96) Dry 36+ test result. PTV (96): Pendulum Test Value - 4S. PTV (55): Pendulum Test Value - TRL. R Value (DIN 51130). Wet Ramp (DIN 51097). PEI: Porcelain Enamel Institute. EPD: Environmental Product Declaration. CSV: Colour Shade Variation.

TECHNICAL SUPPORT

Specification, Sustainability and Important Information

Important Information

During the manufacturing process of ceramic and porcelain tiles, some variation in shade and pattern can occur. Before fixing any tiles; several boxes should be opened and their contents mixed to ensure that size, colour and patterning are acceptable.

The tiles shown in this literature are quality products and conform to BS EN 14411 as shown in the physical properties listed above.

For a comprehensive colour, size, finish and availability overview along with full technical and sustainability information for all products shown, please visit our website - www.johnson-tiles.com

- All sizes listed are metric modular.
- For specific suitability details, please contact our technical advice helpline or use the email address provided.
- Johnson Tiles Limited cannot accept responsibility for any tiles that have already been fixed.
- Johnson Tiles Limited reserves the right to change specification and availability information without prior notice.
- Nothing in these statements does or will affect the statutory rights of the consumer.

All product technical values quoted in this literature are supported by laboratory testing from our own and independent ceramic test houses. Johnson Tiles Limited are British Standard registered. To find out more, please contact our technical advice helpline on +44 (0)1782 524 111 or email: technical@johnson-tiles.com.



Wall: Flint Linear Natural 900x300x11mm - MIN04L
Floor: Flint Natural 900x900x9mm - MIN04N

WHERE TO FIND US

Head Office

Harewood Street, Tunstall,
Stoke on Trent, Staffordshire,
ST6 5JZ, United Kingdom

Tel: +44 (0)1782 575 575
Email: info@johnson-tiles.com
www.johnson-tiles.com

Material Lab Studio

10 Great Titchfield Street,
London, W1W 8BB,
United Kingdom

Tel: +44 (0)20 7436 8629
Email: info@material-lab.co.uk
www.material-lab.co.uk

Factory Outlet

Tel: +44 (0)1782 524 040
Email: foutlet@johnson-tiles.com
www.outlet.johnson-tiles.com

Customer Services

Tel: +44 (0)1782 524 000
Email: sales@johnson-tiles.com
8:30am - 4:30pm (Monday - Friday)

Order A Sample

Tel: +44 (0)1782 524 043
Email: samples@johnson-tiles.com

Technical Advice Helpline

Tel: +44 (0)1782 524 111
Email: technical@johnson-tiles.com

Updated: December 2024



© 2024 Johnson Tiles Limited