

Ver 04 - PALAM 28.10.24

# ANTI-MOULD

## FLEXIBLE WALL AND FLOOR GROUT

- HIGH STRENGTH GROUT WITH ENHANCED ABRASION & WATER RESISTANCE
- CONTAINS A PROTECTIVE BIOCIDES TO RESIST BLACK SPOT MOULD GROWTH
- SUITABLE JOINTS FROM 2 TO 15MM WIDE INCLUDING IN SHOWERS & IMMERSED AREAS
- SUITABLE FOR HEATED FLOORS & SURFACES WHERE LIMITED MOVEMENT IS LIKELY
- RECOMMENDED FOR GROUTING PORCELAIN, VITRIFIED, GLAZED, GLASS, MOSAICS & MARBLE

### TECHNICAL SUMMARY

UNIT SIZES	3kg & 10kg
COLOURS	12
JOINT WIDTHS	2 - 15mm
TIME UNTIL FOOT TRAFFIC	24 hours*
WORKING POT LIFE	2 hours*
INITIAL SET TIME	4 - 5 hours*
APPLICATION TEMPERATURES	5 - 35°C

\* Dependent on temperature of substrate and site conditions



### PALACE ANTI-MOULD GROUT

Is a polymer reinforced, cement-based joint filling compound, available in WHITE, GREY, ANTHRACITE, CHARCOAL, BROWN, IVORY, BAHAMA BEIGE, SANDSTONE, LIMESTONE, SILVER GREY, GRAPHITE & GUN GREY for wall & floor tile joints up to 15mm wide around all types of ceramic wall tiles.

HIGH STRENGTH GROUT

AVAILABLE IN 12 COLOURS

# ANTI-MOULD

## Flexible Wall and Floor Grout



### DESCRIPTION

**PALACE ANTI-MOULD GROUT** is available in a range of 12 colours for wall & floor tile joints up to 15mm wide. It is an easy to mix, readily compactable grouting compound which can be applied across all types of ceramic tiled surfaces using a sponge or rubber squeegee. **PALACE ANTI-MOULD GROUT** will dry to a hard, durable, shrink resistant, mould resistant and water-resistant finish, suitable for internal and external locations and especially in sanitary areas in kitchens, showers, toilets & bathrooms where inhibition of fungal growth is essential. **PALACE ANTI-MOULD GROUT** is recommended when fixing tiles applied over timber ply-boards and heated sub-floors where some minor vibration can be expected.

### SURFACE PREPARATION

Check that all tiles are securely fixed and that the adhesive has thoroughly dried before applying any load or pressure to the tiled surface. Ensure all joints are raked clear of any excess adhesive residues to allow an even and consistent depth of grout to be applied in all areas and do not leave water standing in joints. Note: Certain types of tile may be porous, prone to surface discolouration or mild abrasion and some natural stone and porous, un-glazed tiles are particularly prone to absorption of grout fines. Apply mixed grout to a spare tile to determine whether staining or scratching is likely and consult the tile manufacturer prior as to whether they recommend a suitable sealing compound to protect the surface.

### MIX PREPARATION

**PALACE ANTI-MOULD GROUT** should be added to water in a clean container whilst mechanically stirring and mixing thoroughly to give a smooth, consistent and easily worked mortar. The recommended mixing proportions by volume are approximately 1-part water to 3 parts powder by volume (approximately 1.2 litres per 3kg sachet of powder). Do not add more water than is necessary as this may prolong drying, affect the finished colour shade and significantly reduce the strength of the cured grout.

Part-used grout should never be "freshened up" with later water additions but should always be discarded once it appears to lose workability. In ideal conditions (20°C), fast-setting **PALACE ANTI-MOULD GROUT** will remain readily workable for up to 1 hour and then reach final set after 90 to 120 minutes. When grouting over a large area using several bags of grout, ensure all mixes are from the same batch and that a consistent and identical water addition is used for each mix.

### APPLICATION METHOD

Use a rubber squeegee, or smooth sponge to work the grout thoroughly and consistently into the tile joints, removing the excess as work proceeds across the tiled area. Fine grout residues can be washed away with a lightly damp cloth or sponge up to 2 hours after application, with a final clean finish being achieved using a dry cloth to polish the surface when the joints have dried and hardened. Always ensure cleaning cloths are clean and free from any contamination and no excess water remains on the cleaned surface, as both are likely to cause colour inconsistency on the surface of the cured grout. **PALACE ANTI-MOULD GROUT** will be more difficult to remove from tiled surfaces than standard wall grout when dry therefore extra care is necessary to ensure residues are completely removed as the application proceeds before the grout begins to dry. If completing a shower, do NOT use shower for at least 2 weeks (BS 5385: Part 4:2009, clause 7.2.1).

### COVERAGE

This will depend on the tile size, joint width and depth and the Grout Coverage Factor, which for **PALACE ANTI-MOULD GROUT** is 1.7. The approximate grout requirements for square or rectangular tiles can be estimated as follows:

**(Tile length + Tile width) X Joint width X Joint depth X 1.7 (Tile length X Tile width)**

JOINT WIDTH	TILE SIZE (mm)	COVERAGE (KG)
6MM	150 X 200 X 6	0.67 KG/M <sup>2</sup>
6MM	200 X 250 X 10	0.86 KG/M <sup>2</sup>
8MM	100 X 100 X 8	2.00 KG/M <sup>2</sup>
8MM	150 X 150 X 6	1.00 KG/M <sup>2</sup>

### STORAGE AND PACKAGING

**PALACE ANTI-MOULD GROUT** is supplied in 3kg moisture resistant air-tight sachets or 10kg sacks containing 4 x 2.5kg air tight sachets and has a storage life of 24 months if stored in dry, un-opened conditions.

### HEALTH AND SAFETY

Always ensure that appropriate PPE is worn when mixing & applying this product to ensure protection from airborne dust and skin contact with the mixed liquid product. Wash hands after use and launder stained clothing. Do not consume food when working with this material and keep children & animals away from any possible risk of contact. A complete PALACE material safety data sheet is available on request or online at [www.palacechemicals.co.uk](http://www.palacechemicals.co.uk)



EN ISO 45001



OHS 596309

EN ISO 14001



EMS 85788

EN ISO 9001



FM 01010

**PALACE CHEMICALS LTD**

SPEKE HALL INDUSTRIAL ESTATE

SPEKE LIVERPOOL L24 1YA

TEL: 0151 486 6101 - FAX: 0151 448 1982

E-MAIL: SALES@PALACECHEMICALS.CO.UK

# ANTI-MOULD

## Flexible Wall and Floor Grout



### QUALITY AND ENVIRONMENT

All Palace Chemicals products are manufactured under a BSI accredited ISO 9001:2015 Quality Management System, along with an ISO 14001 Environmental Management system continually working to reduce our carbon footprint.

### TECHNICAL ADVISORY SERVICE

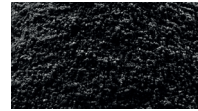
Should more specific technical information be required, contact the Palace Technical helpline on: **0151 486 6101**.

For a Technical Specification and quantity requirements, visit our 'TilingSpecifier' on the Palace website at: <http://www.palacechemicals.co.uk>

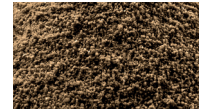
TECHNICAL SUMMARY	
UNIT SIZES	3kg & 10kg
COLOURS	12
JOINT WIDTHS	2 - 15mm
TIME UNTIL FOOT TRAFFIC	24 hours*
WORKING POT LIFE	2 hours*
INITIAL SET TIME	4 - 5 hours*
APPLICATION TEMPERATURES	5 - 35°C

\* Dependent on temperature of substrate and site conditions

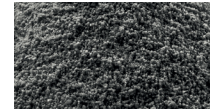
### COLOURS AVAILABLE



ANTHRACITE



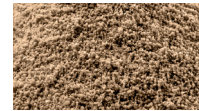
BROWN



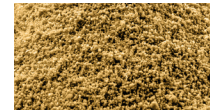
CHARCOAL



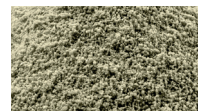
GREY



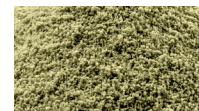
BAHAMA BEIGE



SANDSTONE



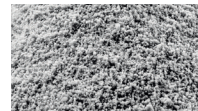
LIMESTONE



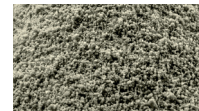
IVORY



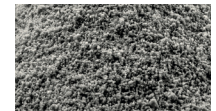
WHITE



SILVER GREY



GRAPHITE



GUN GREY

<b>PALACE CHEMICALS LTD</b> SPEKE HALL INDUSTRIAL ESTATE SPEKE LIVERPOOL L24 1YA	
<b>EN 13888 - CG 2WA</b> Improved cementitious grout with additional characteristics of reduced water absorption and high abrasion resistance	
ABRASION RESISTANCE	< 1000 mm <sup>3</sup>
COMPRESSIVE STRENGTH - (DRY)	> 15.0 N/mm <sup>2</sup>
COMPRESSIVE STRENGTH - (FREEZE THAW)	> 15.0 N/mm <sup>2</sup>
FLEXURAL STRENGTH - (DRY)	> 2.5 N/mm <sup>2</sup>
FLEXURAL STRENGTH - (FREEZE THAW)	> 2.5 N/mm <sup>2</sup>
SHRINKAGE	< 2.0 mm/m
WATER ABSORPTION AT 30 MINS	< 2.0 g
WATER ABSORPTION AT 6 HOURS	< 5.0 g
RESISTANCE TO FIRE	NPD

### DISCLAIMER

The information provided by this Technical data sheet is given in good faith and is to the best of our current knowledge true and accurate. Our products are guaranteed against defective materials and manufacture and will be replaced or money refunded if the goods do not comply with our promotional literature. We cannot however accept responsibility arising from the application or use of our products because we have no direct or control over where and how our products are stored and used. All products are sold and guaranteed subject to our terms and conditions of sale, copies of which may be obtained on request.

